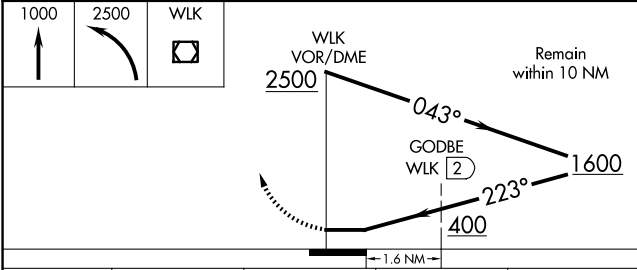
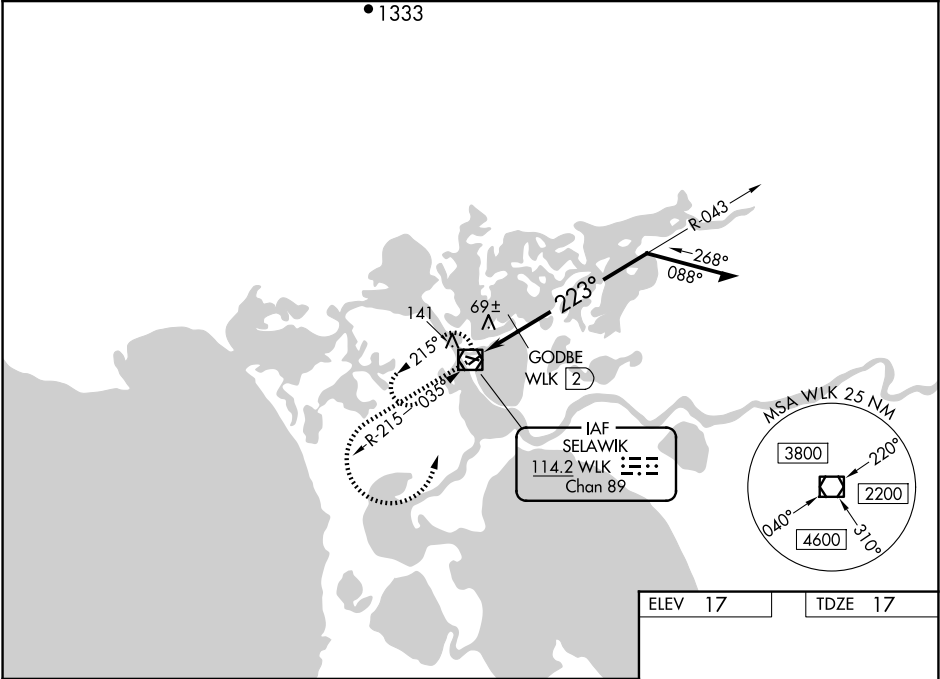


VOR/DME	WLK	APP CRS	Rwy Ldg	3002
114.2		223°	TDZE	17
Chan 89			Apt Elev	17

VOR RWY 22
SELAWIK (WLK) (PASK)

Circling Rwy 9, 27 NA at night.		MISSED APPROACH: Climb to 1000 then climbing left turn to 2500 direct WLK VOR/DME and hold, continue climb-in-hold to 2500.	
AWOS-3P 135.65	ANCHORAGE CENTER 119.2 263.0	KOTzebue RADIO 122.5	CTAF 122.7



CATEGORY	A	B	C	D
S-22	400-1	383 (400-1)	400-1¼	383 (400-1¼)
CIRCLING	480-1 463 (500-1)	580-1 563 (600-1)	580-1½ 563 (600-1½)	580-2 563 (600-2)
GODBE FIX MINIMUMS				
S-22	340-1 323 (400-1)			
CIRCLING	480-1 463 (500-1)	580-1 563 (600-1)	580-1½ 563 (600-1½)	580-2 563 (600-2)

