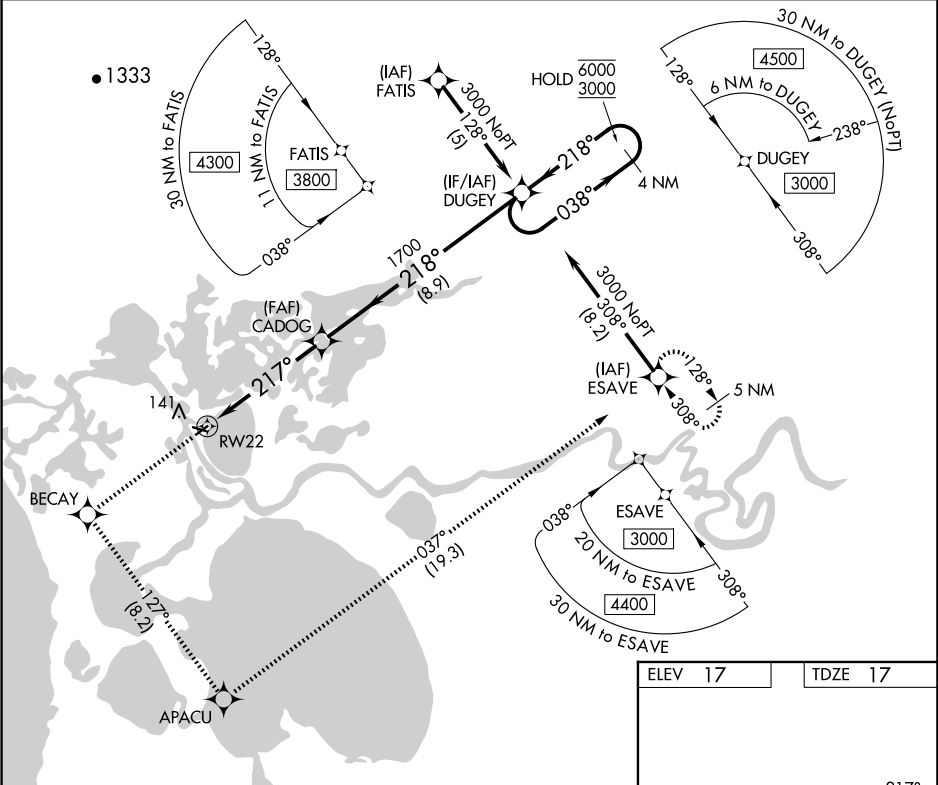


WAAS CH 40404 W22A	APP CRS 217°	Rwy Ldg TDZE 17 Apt Elev 17
--	------------------------	---

RNAV (GPS) Z RWY 22

SELAWIK (WLK) (PASK)

RNP APCH. ▼ For uncompensated Baro-VNAV systems, LNAV/VNAV NA below -25°C or above 49°C.		MISSED APPROACH: Climb to 3000 direct BECAY and left turn on track 127° to APACU and left turn on track 037° to ESAVE and hold.	
AWOS-3P 135.65	ANCHORAGE CENTER 119.2 263.0	KOTzebue RADIO 122.5	CTAF 122.7 0



3000	BECAY	APACU	ESAVE	DUGEY
↑	✧	✧	✧	✧
	tr 127°	tr 037°		4 NM Holding Pattern
CADOG				
RW22				
1700				
217°				
218°				
038°				
6000				
3000				
GP 3.00°				
TCH 45				
5.1 NM				
8.9 NM				
CATEGORY	A	B	C	D
LPV DA	267-1 250 (300-1)			
LNAV/VNAV DA	364-1¼ 347 (400-1¼)			

