

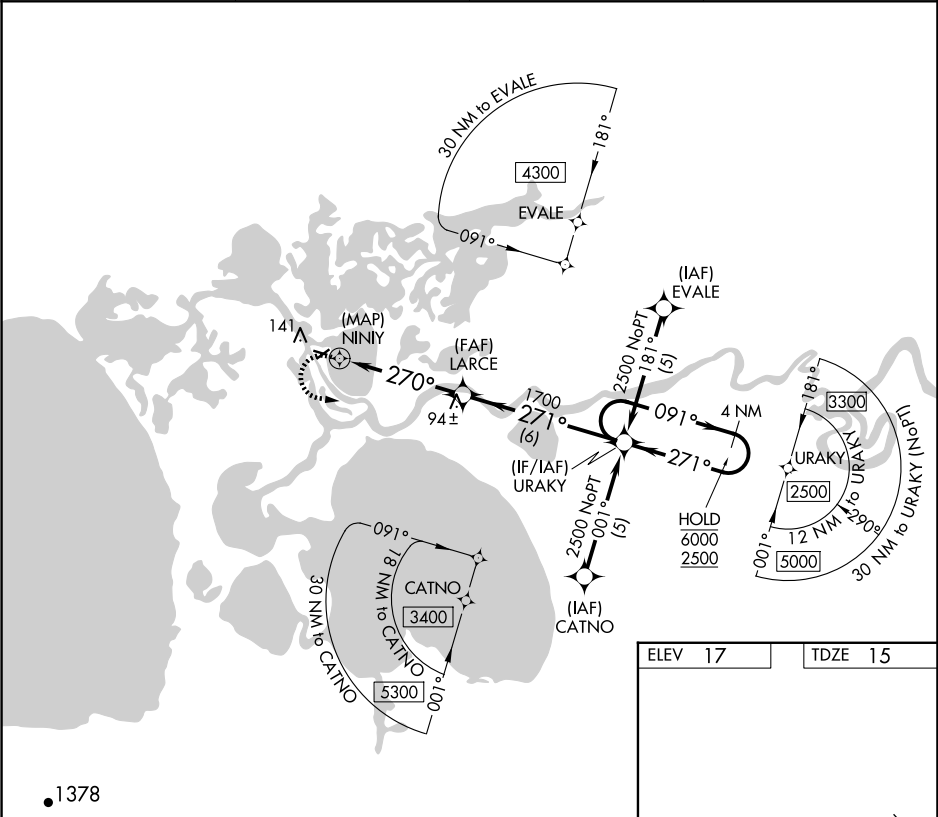
APP CRS	Rwy Ldg	2659
270°	TDZE	15
	Apt Elev	17

RNAV (GPS) RWY 27

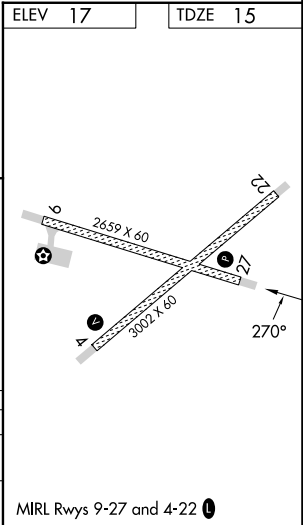
SELAWIK (WLK) (PASK)

RNP APCH.	MISSED APPROACH: Climbing left turn to 2500 direct URAKY and hold.
▼ Rwy 27 helicopter visibility reduction below 1 SM NA. Straight-in and Circling Rwy 27 NA at night, Circling Rwy 9 NA at night.	

AWOS-3P 135.65	ANCHORAGE CENTER 119.2 263.0	KOTZEBUE RADIO 122.5	CTAF 122.7 0
-------------------	---------------------------------	-------------------------	-----------------



2500 URAKY		VGSI and descent angles not coincident (VGSI Angle 3.00/TCH 25).		4 NM Holding Pattern	
		LARCE		URAKY	
NINNY		≤ 3.04° TCH 45		091° → 6000	
270°		271°		← 271° 2500	
1700					
0.5		4.6 NM		6 NM	
CATEGORY	A	B	C	D	
LNVA MDA	420-1	405 (500-1)	420-1¼	405 (500-1¼)	
CIRCLING	480-1 463 (500-1)	580-1 563 (600-1)	580-1½ 563 (600-1½)	580-2 563 (600-2)	



AK, 12 JUN 2025 to 07 AUG 2025

AK, 12 JUN 2025 to 07 AUG 2025