

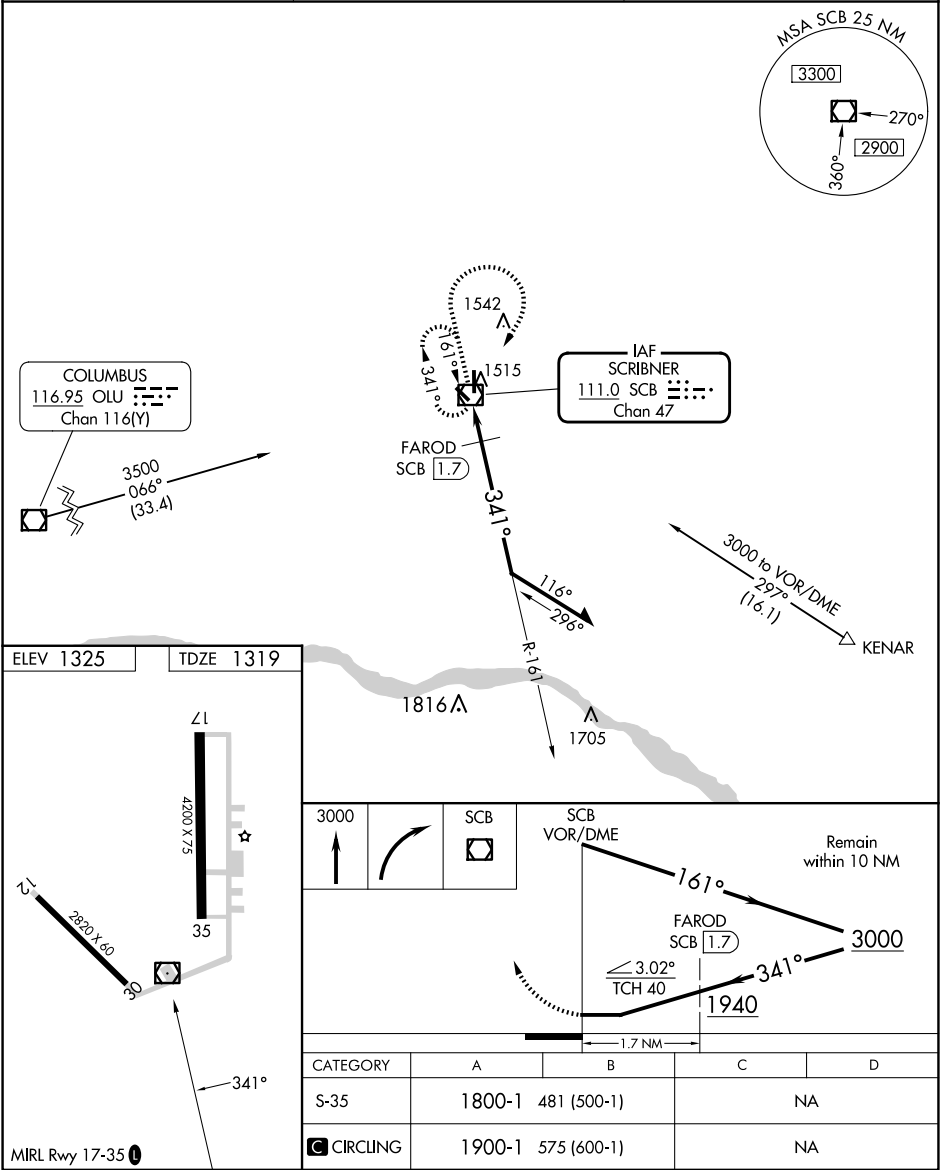
VOR/DME SCB	APP CRS	Rwy Idg	4200
111.0	341°	TDZE	1319
Chan 47		Apt Elev	1325

VOR/DME RWY 35

SCRIBNER STATE (SCB)

<div><div></div><div>NA</div></div>	Use Fremont altimeter setting.	MISSED APPROACH: Climb to 3000 then right turn direct SCB VOR/DME and hold.
-------------------------------------	--------------------------------	---

FET AWOS-3	OMAHA APP CON	CTAF
121.275	135.875 354.05	122.9



NC-2, 10 JUL 2025 to 07 AUG 2025

NC-2, 10 JUL 2025 to 07 AUG 2025