

VORTAC MLU  
**117.2**  
Chan **119**

APP CRS  
**267°**

Rwy Idg  
TDZE  
Apt Elev  
**N/A**  
**N/A**  
**317**

VOR-A  
RUSTON RGNL (RSN)

DME required.

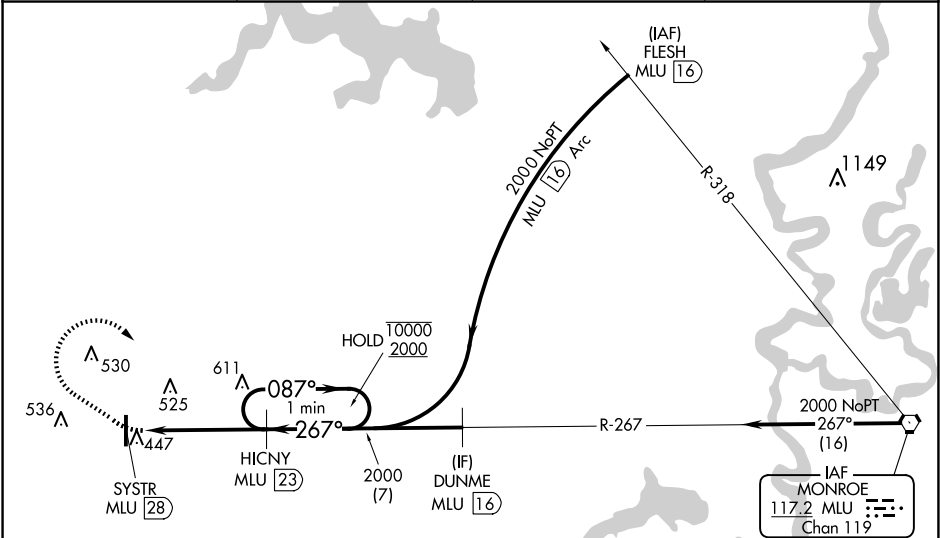
MISSED APPROACH: Climbing right turn to 2000 on heading 120° and on MLU VORTAC R-267 to HICNY/23 DME and hold, continue climb-in-hold to 2000.

AWOS-3PT  
**119.525**

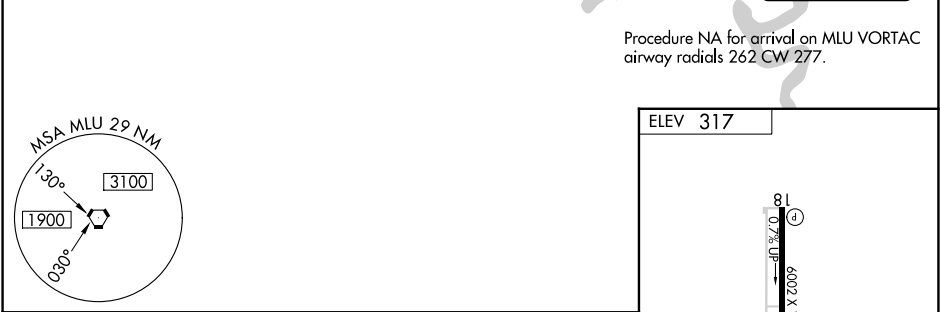
MONROE APP CON ★  
**126.9 307.9**

CLNC DEL  
**118.8**

UNICOM  
**122.7 (CTAF)**



Procedure NA for arrival on MLU VORTAC airway radials 262 CW 277.



2000  
hdg  
120°

MLU R-267

HICNY MLU 23

HICNY MLU 23

One Minute Holding Pattern

DUNME MLU 16

SYSTR MLU 28

267°

087°

10000

2000

2000

5 NM

7 NM

CATEGORY	A	B	C	D
CIRCLING	880-1	563 (600-1)	900-1½ 583 (600-1½)	960-2 643 (700-2)

MIRL Rwy 18-36

REIL Rwys 18 and 36