

RUSTON, LOUISIANA

AL-9201 (FAA)

23278

WAAS CH 86722 W36A	APP CRS 357°	Rwy Idg 6002 TDZE 317 Apt Elev 317
--	------------------------	---

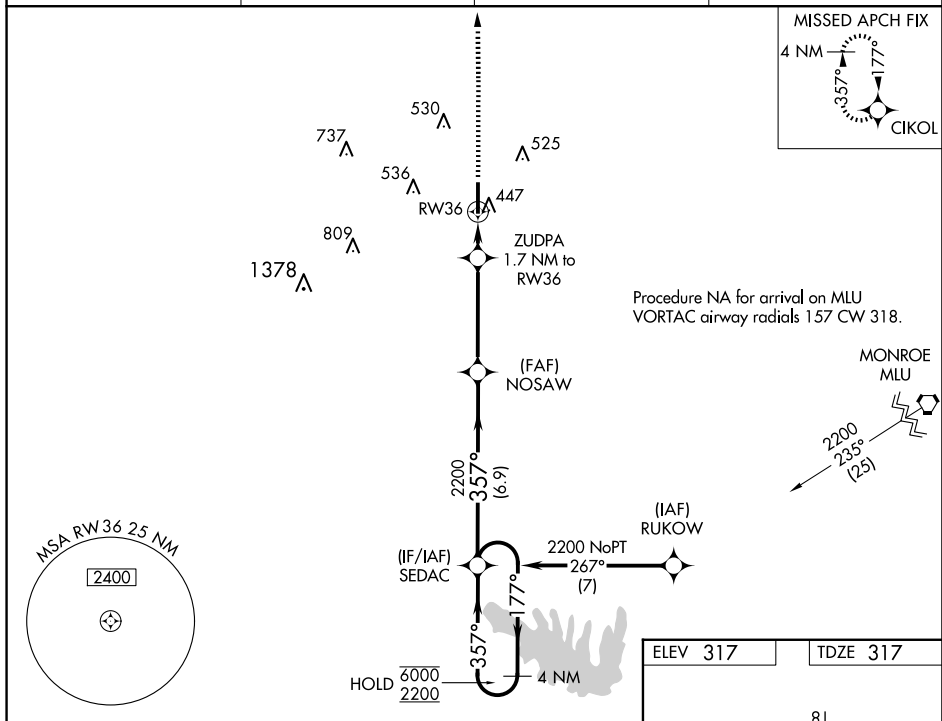
RNAV (GPS) RWY 36
RUSTON RGNL (RSN)

RNP APCH - GPS.

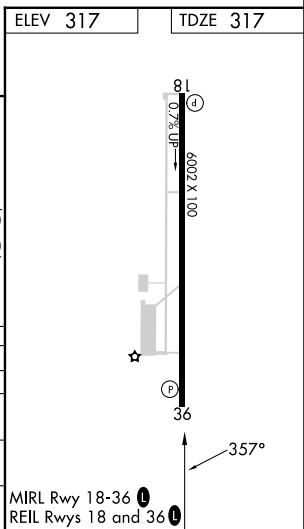
T Rwy 36 helicopter visibility reduction below $\frac{3}{4}$ SM NA.
A For uncompensated Baro-VNAV systems, LNAV/VNAV NA below -15°C or above 54°C.

MISSED APPROACH: Climb to 2000 direct CIKOL and hold.

AWOS-3PT 119.525	MONROE APP CON ★ 126.9 307.9	CLNC DEL 118.8	UNICOM 122.7 (CTAF) ①
----------------------------	--	--------------------------	---------------------------------



<div style="display: flex; justify-content: space-around;"> <div style="text-align: center;"> 2000 ↑ </div> <div style="text-align: center;"> CKOL </div> </div>							
CATEGORY		A	B	C	D	E	F
LPV DA			602- $\frac{3}{4}$	285 (300- $\frac{3}{4}$)			
LNAV/VNAV DA			628- $\frac{3}{4}$	311 (400- $\frac{3}{4}$)			
LNAV MDA		700- $\frac{3}{4}$	383 (400- $\frac{3}{4}$)	700-1	383 (400-1)		
C CIRCLING		760-1 443 (500-1)	780-1 463 (500-1)	900-1½ 583 (600-1½)	960-2 643 (700-2)		



RUSTON, LOUISIANA

Amdt 2 05OCT23

32°31'N-92°35'W

RUSTON RGNL (RSN)

RNAV (GPS) RWY 36

SC-4, 10 JUL 2025 to 07 AUG 2025