

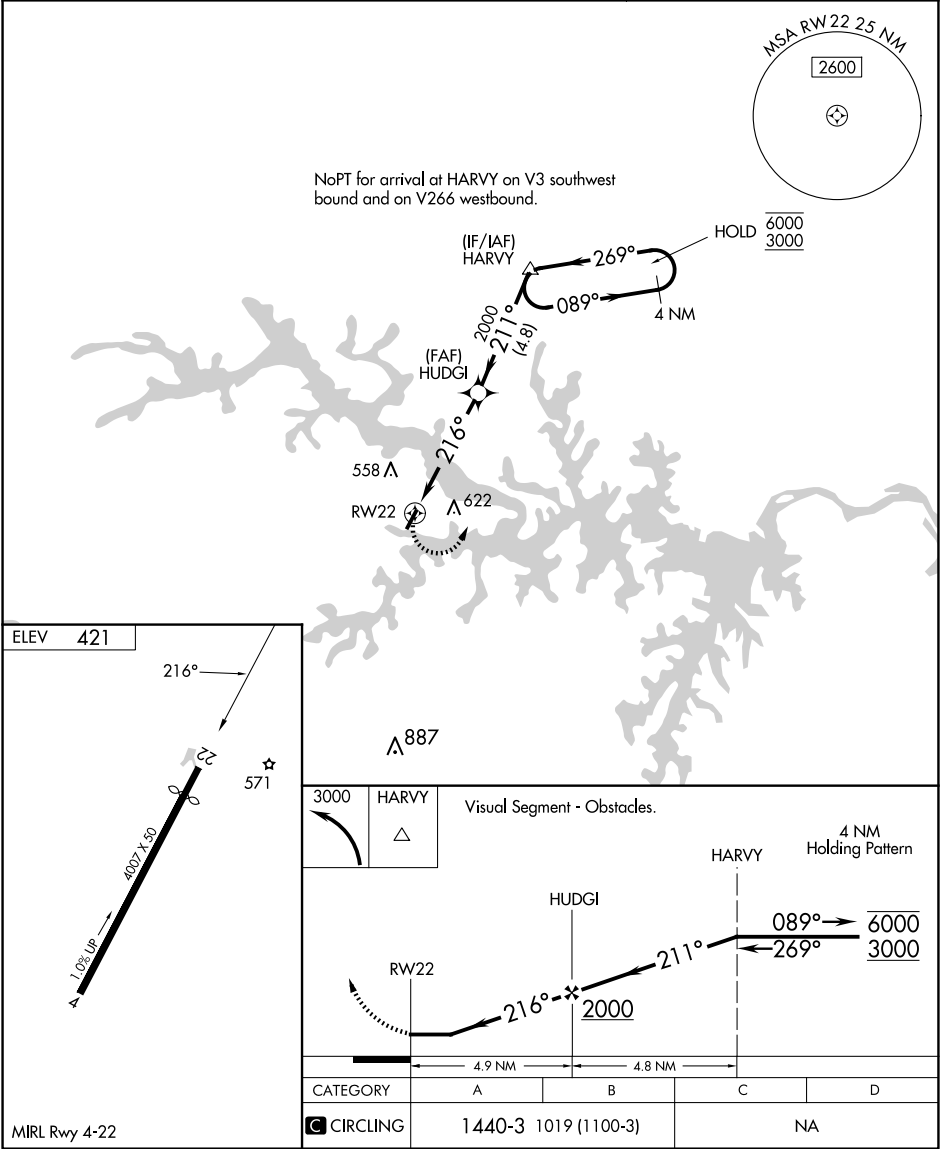
APP CRS
216°

Rwy Idg
TDZE
Apt Elev

N/A
N/A
421

RNAV (GPS)-B
LAKE COUNTRY RGNL (W63)

RNP APCH - GPS. <div><div>▼</div><div>▲</div></div> <div>Rwy 22 helicopter visibility reduction below 1 SM NA. Procedure NA at night. When local altimeter setting not received, use Chase City altimeter setting and increase all MDA 40 feet.</div>		MISSED APPROACH: Climbing left turn to 3000 direct HARVY and hold.
AWOS-3 118.225	WASHINGTON CENTER 118.75 377.1	CTAF 122.9



NE-3, 10 JUL 2025 to 07 AUG 2025

NE-3, 10 JUL 2025 to 07 AUG 2025