

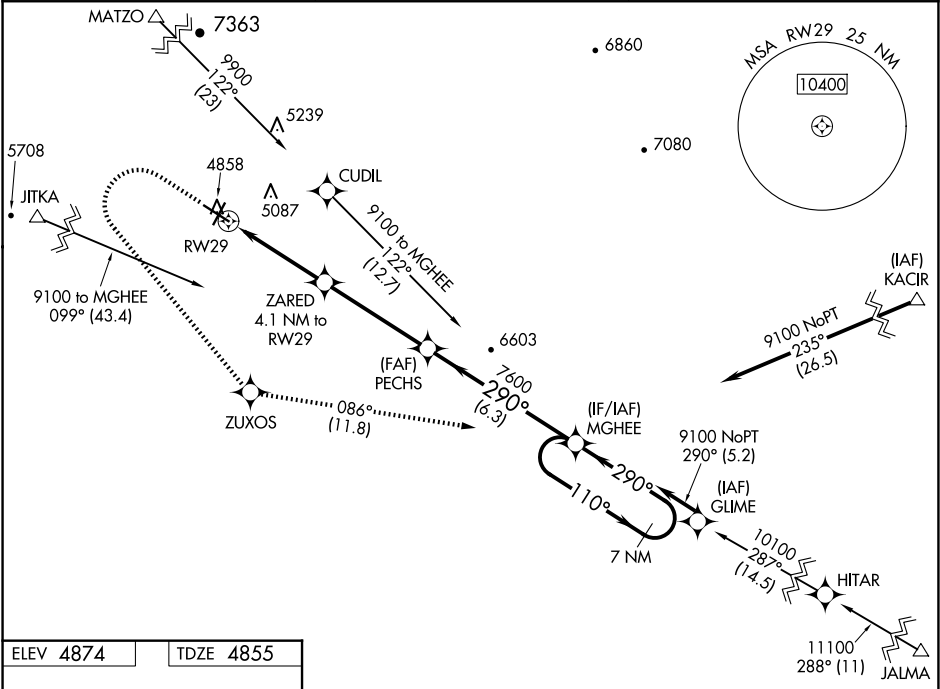
WAAS CH 72740 W29A	APP CRS 290°	Rwy Idg TDZE 4855 Apt Elev 4874
--	------------------------	---

RNAV (GPS) RWY 29

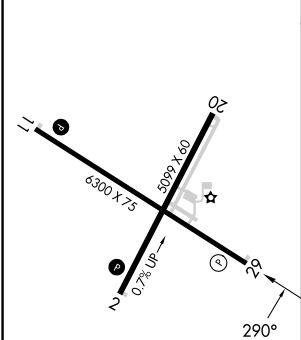
COLORADO CITY MUNI (AZC)

RNP APCH.	MISSED APPROACH: Climb to 6600 then climbing left turn to 9100 direct ZUXOS and track 086° to MGHEE and hold.
Baro-VNAV NA. Circling NA for Cat D north of Rwy 11-29.	

AWOS-3PT 118.375	LOS ANGELES CENTER 124.2 343.6	UNICOM 122.7 (CTAF)
----------------------------	--	-------------------------------



ELEV 4874	TDZE 4855
------------------	------------------



REIL Rwy 11
REIL Rwy 29
MIRL Rwy 11-29 and 2-20

6600	9100	ZUXOS	tr 086°	MGHEE	
* LNAV only					
ZARED 4.1 NM to RW29					
* 1.9 NM to RW29					
RW29					
1.9 NM 2.2 NM 4.4 NM 6.3 NM					
6200*					
7600					
7600					
110° 290° 290° 9100					
GP 3.00° TCH 40					
CATEGORY	A	B	C	D	
LPV DA	5105-1 250 (300-1)				
LNAV/VNAV DA	5157-1 302 (300-1)				
LNAV MDA	5500-1	645 (700-1)	5500-1 7/8	645 (700-1 7/8)	
CIRCLING	5500-1	5520-1	6880-3	2006 (2100-3)	
	626 (700-1)	646 (700-1)			