

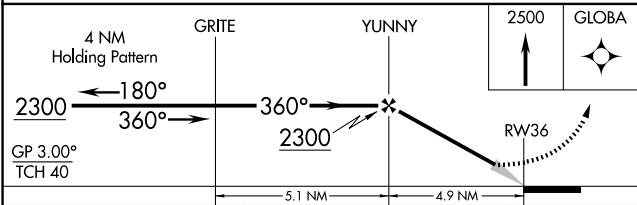
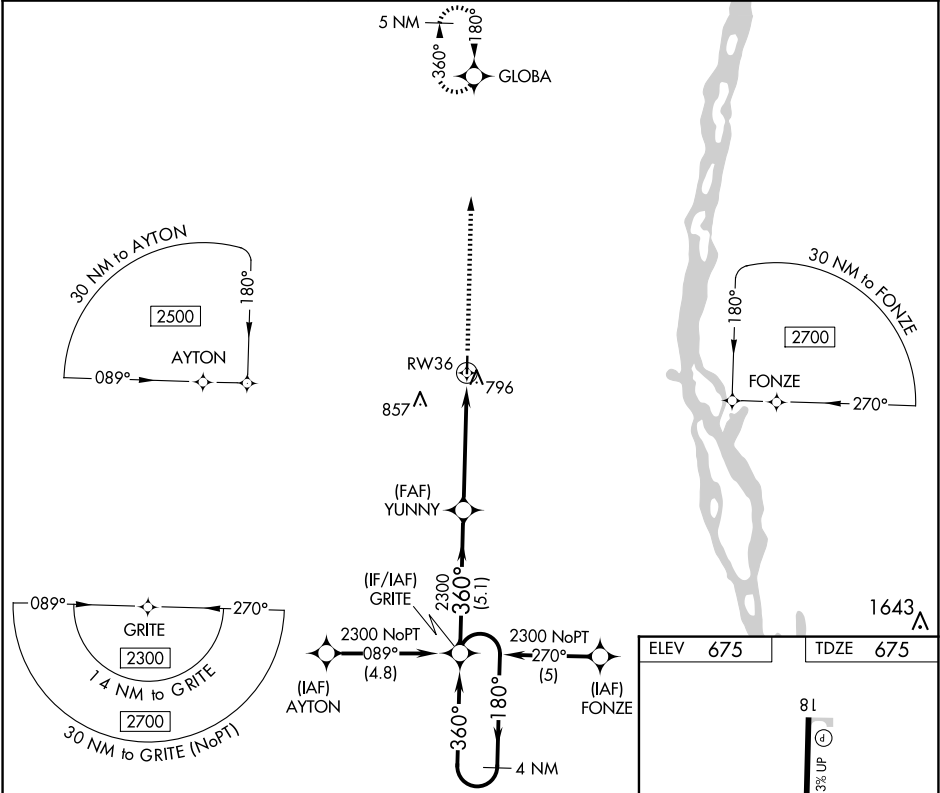
WAAS CH 97601 W36A	APP CRS 360°	Rwy Ldg TDZE 675 Apt Elev 675
--	------------------------	---

RNAV (GPS) RWY 36

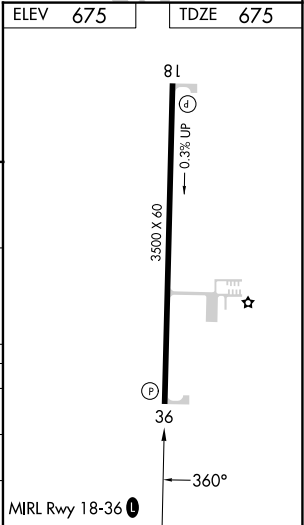
LEWIS COUNTY RGNL (6M6)

RNP APCH.	MISSED APPROACH: Climb to 2500 direct GLOBA and hold.
-----------	---

UIN ASOS 121.425	KANSAS CITY CENTER 126.225 317.775	UNICOM 122.7 (CTAF) 0
----------------------------	--	---------------------------------



CATEGORY	A	B	C	D
LPV DA	996-1¼	321 (400-1¼)	NA	
LNAV/VNAV DA	1137-1¾	462 (500-1¾)	NA	
LNAV MDA	1120-1	445 (500-1)	NA	



NC-3, 10 JUL 2025 to 07 AUG 2025

NC-3, 10 JUL 2025 to 07 AUG 2025