

WAAS CH 50401 W18A	APP CRS 180°	Rwy Ldg 3500 TDZE 675 Apt Elev 675
--	------------------------	---

RNAV (GPS) RWY 18

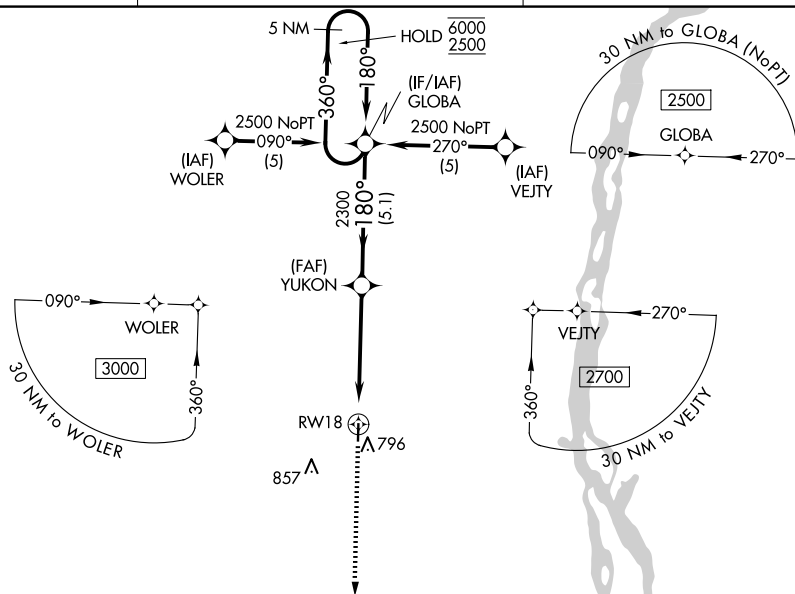
LEWIS COUNTY RGNL (6M6)

RNP APCH.

T Baro-VNAV NA. Use Quincy altimeter setting; when not received use Kirksville altimeter setting;
A NA increase LPV DA to 1098 feet; increase LNAV/VNAV DA to 1145 feet; increase all MDA 80 feet.

MISSED APPROACH:
Climb to 2300 direct
GRITE and hold.

UIN ASOS 121,425	KANSAS CITY CENTER 126,225 317,775	UNICOM 122.7 (CTAF) 0
----------------------------	--	---------------------------------



ELEV 675

TDZE 675

180°

81

3500 X 60

0.3% Up

☆

36

MIRA Rwy 18-36

