

WAAS CH <b>53538</b> <b>W33A</b>	APP CRS <b>328°</b>	Rwy Idg <b>3999</b> TDZE <b>1067</b> Apt Elev <b>1067</b>
--	------------------------	---

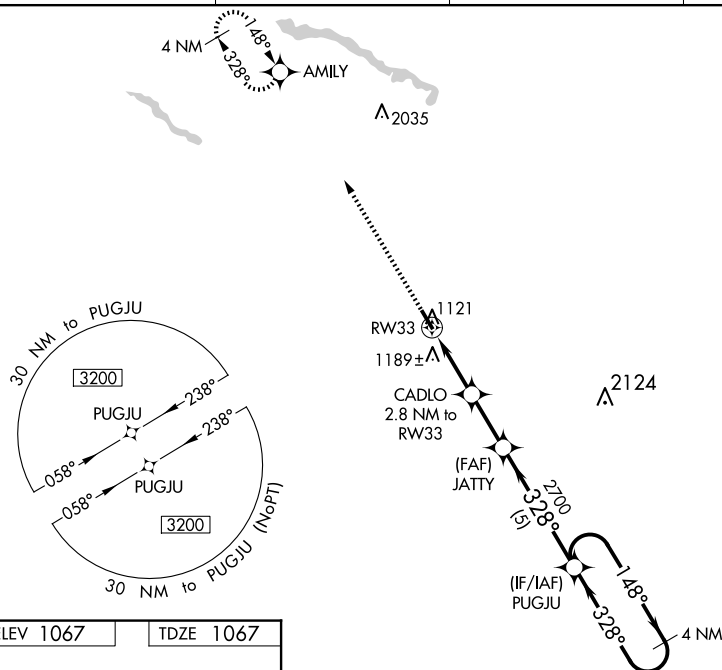
## RNAV (GPS) RWY 33

ST JAMES MUNI (JYG)

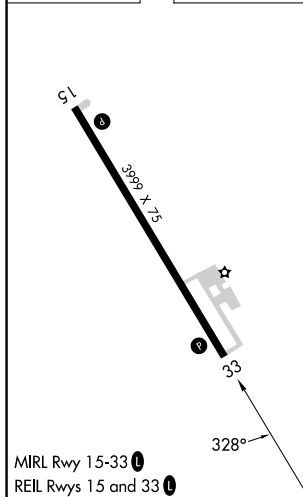
**T** For uncompensated Baro-VNAV systems, procedure NA below -17°C (2°F) or above 54°C (130°F). DME/DME RNP-0.3 NA. Helicopter visibility reduction below  $\frac{3}{4}$  SM NA. Baro-VNAV and VDP NA when using New Ulm altimeter setting. When local altimeter setting not received, use New Ulm, MN altimeter setting and increase LPV DA to 1398 feet, LNAV/VNAV DA to 1549 feet, and all MDA 60 feet.

MISSED APPROACH: Climb to 3200  
direct AMILY and hold.

AWOS-3PT <b>123.7</b>	MINNEAPOLIS CENTER <b>127.75 257.7</b>	GCO <b>121.725</b>	CTAF <b>122.9 0</b>
--------------------------	---	-----------------------	------------------------



ELEV 1067		TDZE 1067
-----------	--	-----------

[illegible]