

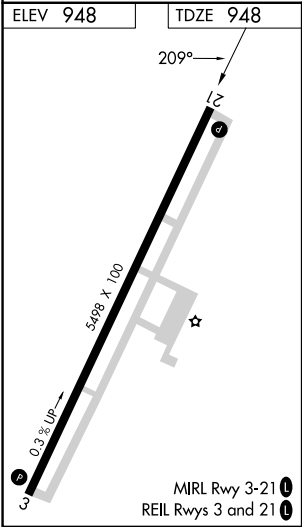
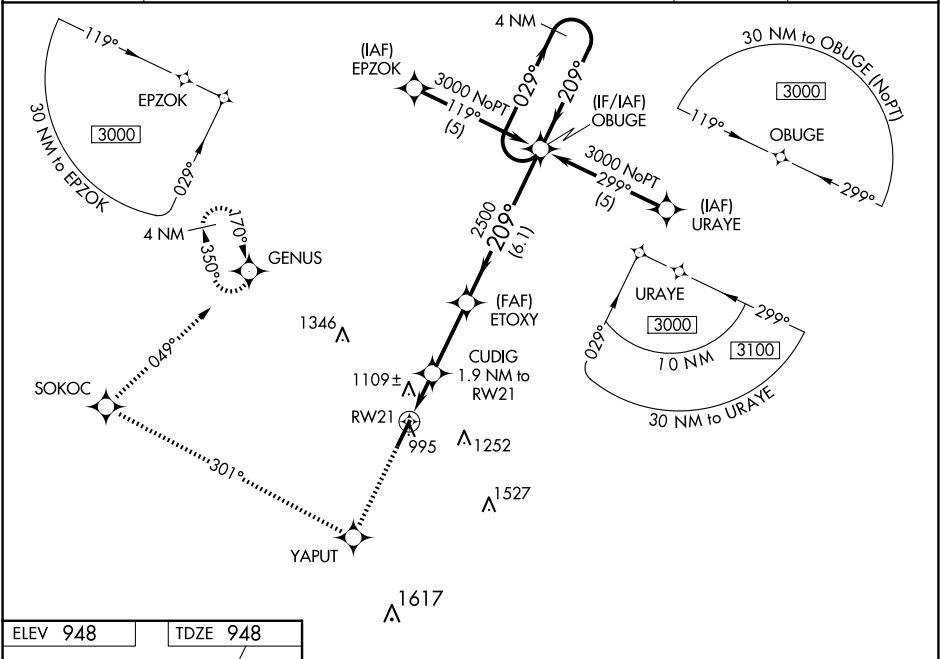
WAAS CH <b>48909</b> <b>W21A</b>	APP CRS <b>209°</b>	Rwy Ldg TDZE <b>948</b> Apt Elev <b>948</b>
--	------------------------	---

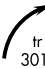
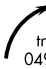
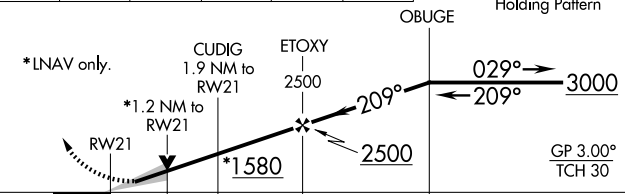
RNAV (GPS) Z RWY 21  
GEORGETOWN-SCOTT COUNTY RGNL (27K)

⚠️ **NA** For uncompensated Baro-VNAV systems, LNAV/VNAV NA below -16° C (4° F) or above 46° C (114° F). DME/DME RNP-0.3 NA. When local altimeter setting not received, use Lexington altimeter setting and increase LPV DA to 1186, LNAV/VNAV DA to 1460, and all MDA 40 feet; increase LPV all Cats and LNAV Cats C/D and Circling Cat D visibility ¼ SM. Baro-VNAV and VDP NA with Lexington altimeter setting.

MISSED APPROACH: Climb to 3000 direct YAPUT and right turn on track 301° to SOKOC and right turn on track 049° to GENUS and hold.

AWOS-3 <b>119.975</b>	LEXINGTON APP CON <b>120.15 259.3 (040° - 220° ) 120.75 298.9 (221° - 039° )</b>	CLNC DEL <b>127.425</b>	UNICOM <b>123.0 (CTAF) ❶</b>
--------------------------	---	----------------------------	---------------------------------



3000 ↑	YAPUT ✧	 tr 301°	SOKOC ✧	 tr 049°	GENUS ✧	
<div><div>4 NM Holding Pattern</div><div><p>*LNAV only.</p><p>CUDIG 1.9 NM to RW21</p><p>ETOXY 2500</p><p>OBUGE</p><p>*1.2 NM to RW21</p><p>RW21</p><p>*1580</p><p>2500</p><p>029° → 3000</p><p>← 209°</p><p>GP 3.00° TCH 30°</p><p>1.2 NM 0.7 NM 2.8 NM 6.1 NM</p></div></div>						
CATEGORY	A		B		C	D
LPV DA	1148-3/4 200 (200-3/4)					
LNAV/ VNAV DA	1422-13/4 474 (500-13/4)					
LNAV MDA	1360-1	412 (500-1)		1360-13/4 412 (500-13/4)		
CIRCLING	1420-1	472 (500-1)		1560-13/4 612 (700-13/4)	1660-21/4 712 (800-21/4)	

SE-1, 10 JUL 2025 to 07 AUG 2025

SE-1, 10 JUL 2025 to 07 AUG 2025