

WAAS
CH **58215**
W30A

APP CRS
301°

Rwy ldg
TDZE **796**
Apt Elev **798**

RNAV (GPS) RWY 30

THOMASTON-UPSON COUNTY (OPN)

RNP APCH-GPS.

▼

▲

For uncompensated Baro-VNAV systems, LNAV/VNAV NA below -16°C or above 54°C. For inop ALS, increase LNAV/VNAV all Cats visibility to ¾ SM and LNAV Cat C/D visibility to 1 SM.

MALSR

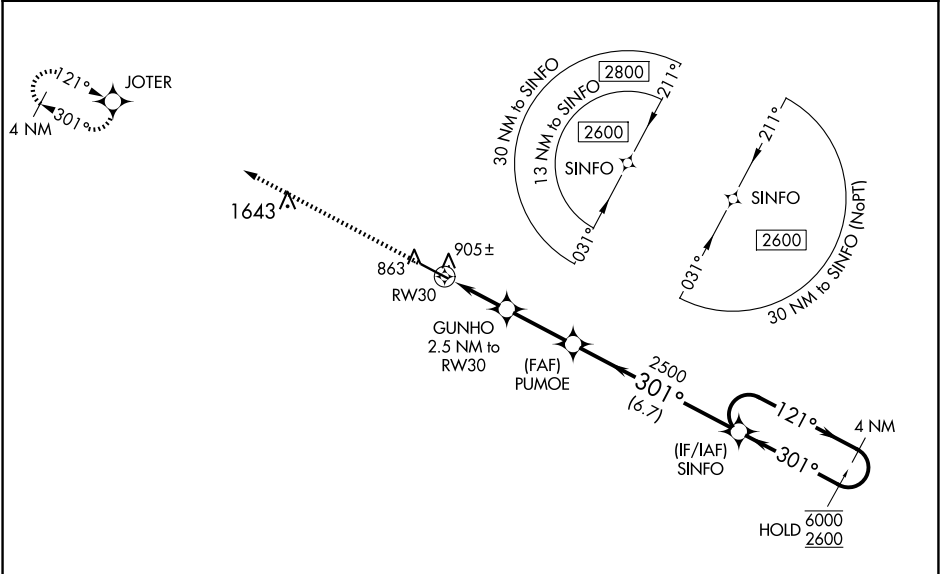
AS

MISSED APPROACH: Climb to 2800 direct JOTER and hold.

AWOS-3
133.975

ATLANTA APP CON ★
124.2 279.6

UNICOM
122.8 (CTAF) 0



ELEV 798

D

TDZE 796

2800 JOTER

VGSI and RNAV glidepath not coincident (VGSI Angle 3.00/TCH 27°).

4 NM Holding Pattern

SINFO

121° 6000

301° 2600

GP 3.00° TCH 50

2500 PUMOE

301° 2500

1640

1.1 NM to RW30

2.5 NM to RW30

1.1 NM

1.4 NM

2.7 NM

6.7 NM

1.2

6350 X 100

10

15

25

301° to RW30

CATEGORY	A	B	C	D
LPV DA		996-½	200 (200-½)	
LNAV/ VNAV DA		1086-½	290 (300-½)	
LNAV MDA	1160-½	364 (400-½)	1160-⅝	364 (400-⅝)
CIRCLING	1220-1 422 (500-1)	1260-1 462 (500-1)	1260-1½ 462 (500-1½)	1680-3 882 (900-3)

MIRL Rwy 12-30 0