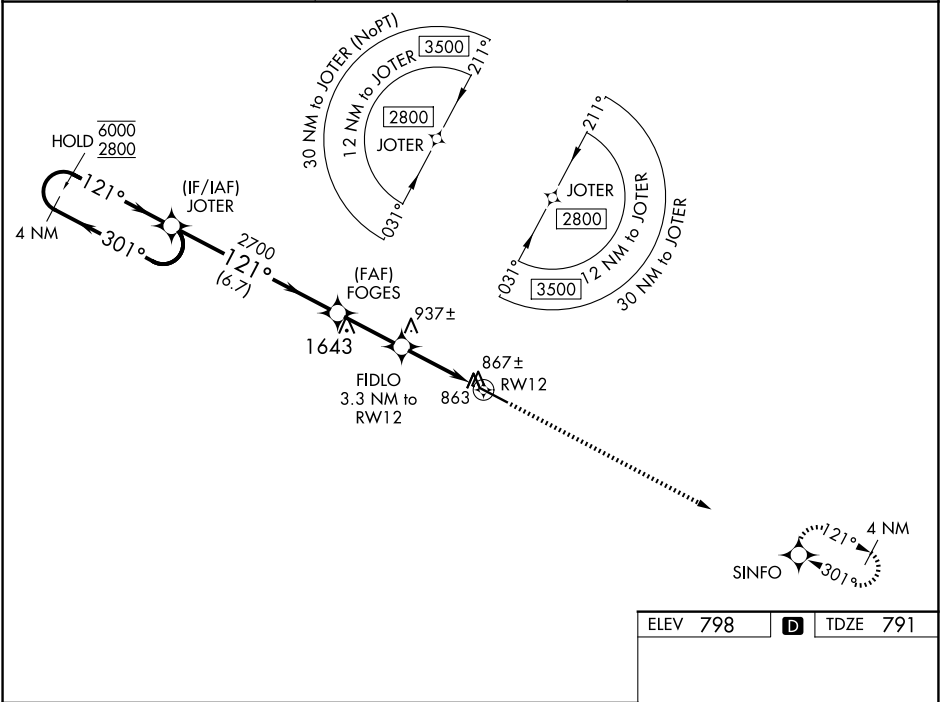


WAAS CH 63115 W12A	APP CRS 121°	Rwy Idg TDZE 791 Apt Elev 798
--	------------------------	---

RNAV (GPS) RWY 12

THOMASTON-UPSON COUNTY (OPN)

RNP APCH-GPS. <div><div>T</div><div>A</div><div>Rwy 12 helicopter visibility reduction below ¾ SM NA. For uncompensated Baro-VNAV systems, LNAV/VNAV NA below -16°C or above 54°C.</div></div>		MISSED APPROACH: Climb to 2600 direct SINFO and hold.
AWOS-3 133.975	ATLANTA APP CON ★ 124.2 279.6	UNICOM 122.8 (CTAF) 0



ELEV 798 D TDZE 791	
VGSi and RNAV glidepath not coincident (VGSi Angle 3.50/TCH 32).	
4 NM Holding Pattern JOTER	
6000 2800 301° 121° 121° 2700 1860 2700 3.3 NM to RW12 0.8 NM to RW12 RW12	
GP 3.00° TCH 40	
6.7 NM 2.6 NM 2.5 0.8	
CATEGORY	A B C D
LPV DA	1041-¾ 250 (300-¾)
LNAV/ VNAV MDA	1041-¾ 250 (300-¾)
LNAV MDA	1120-1 329 (400-1)
CIRCLING	1220-1 422 (500-1) 1260-1 462 (500-1) 1260-1½ 462 (500-1½) 1680-3 882 (900-3)

MIRL Rwy 12-30 0