

WAAS CH 70512 W36A	APP CRS 357°	Rwy Idg 5500 TDZE 891 Apt Elev 910
--	------------------------	---

RNAV (GPS) RWY 36

ANKENY RGNL (IKV)

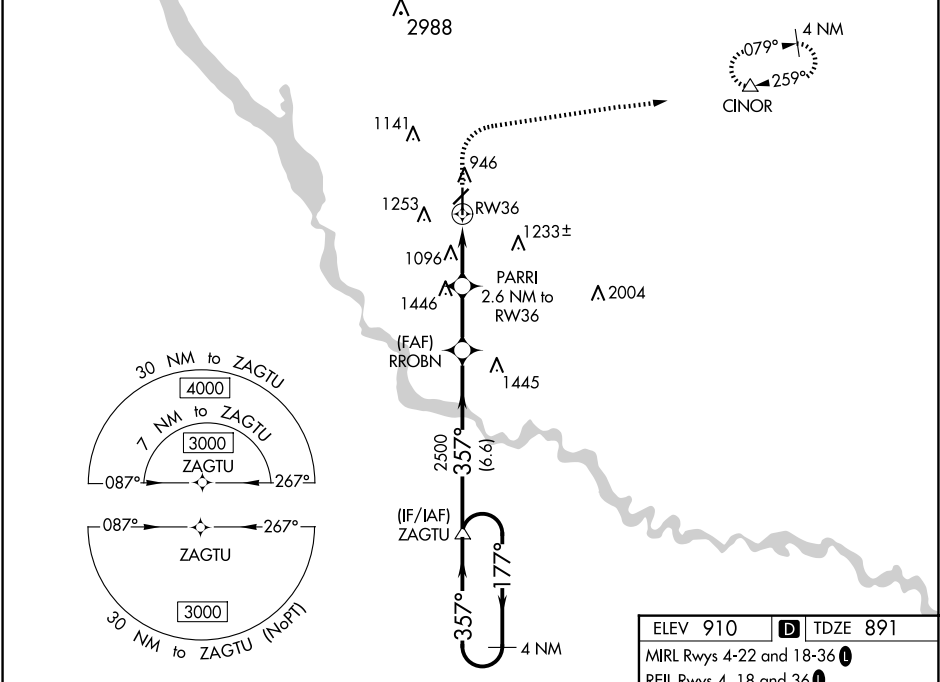
▼

▲

For uncompensated Baro-VNAV systems,
LNAV/VNAV NA below -20°C (-4°F) or above 54°C (130°F).
Circling Rwy 22 NA at night. DME/DME RNP-0.3 NA.

MISSED APPROACH: Climb to 1500
then climbing right turn to 4000 direct
CINOR and hold, continue
climb-in-hold to 4000.

AWOS-3 119.175	DES MOINES APP CON 123.9 307.15	CLNC DEL 126.65	UNICOM 122.9 (CTAF)
--------------------------	---	---------------------------	-------------------------------



		ELEV 910		D TDZE 891	
		MIRL Rwy 4-22 and 18-36			
		REIL Rwy 4, 18 and 36			
		REIL Rwy 22			
		1500		4000	
		CINOR			
		ZAGTU		RROBN	
		3000		2500	
		GP 3.00°		*1760	
		TCH 52		*1.3 NM to RW36	
		6.6 NM		2.3 NM	
		1.3 NM		1.3 NM	
		1.3 NM		1.3 NM	
		RW36			
		*LNAV only			
		CATEGORY			
		A		B	
		LPV DA		1091-3/4 200 (200-3/4)	
		LNAV/VNAV DA		1405-1 514 (500-1 3/4)	
		LNAV MDA		1360-1 469 (500-1) 1360-1 3/8 469 (500-1 3/8)	
		CIRCLING		1560-1 650 (700-1) 1560-1 3/4 650 (700-1 3/4) 1760-2 3/4 850 (900-2 3/4)	