

CONCORD-PADGETT RGNL (JQF)  
CONCORD, NORTH CAROLINA

## KNIGHTS THREE DEPARTURE

CHARLOTTE DEP CON  
128.325 307.8  
ATIS  
133.675  
CLNC DEL  
118.55  
CLNC DEL (when twr closed)  
127.25  
GND CON  
121.85  
CONCORD TOWER ★  
134.65 (CTAF)  
UNICOM  
122.95

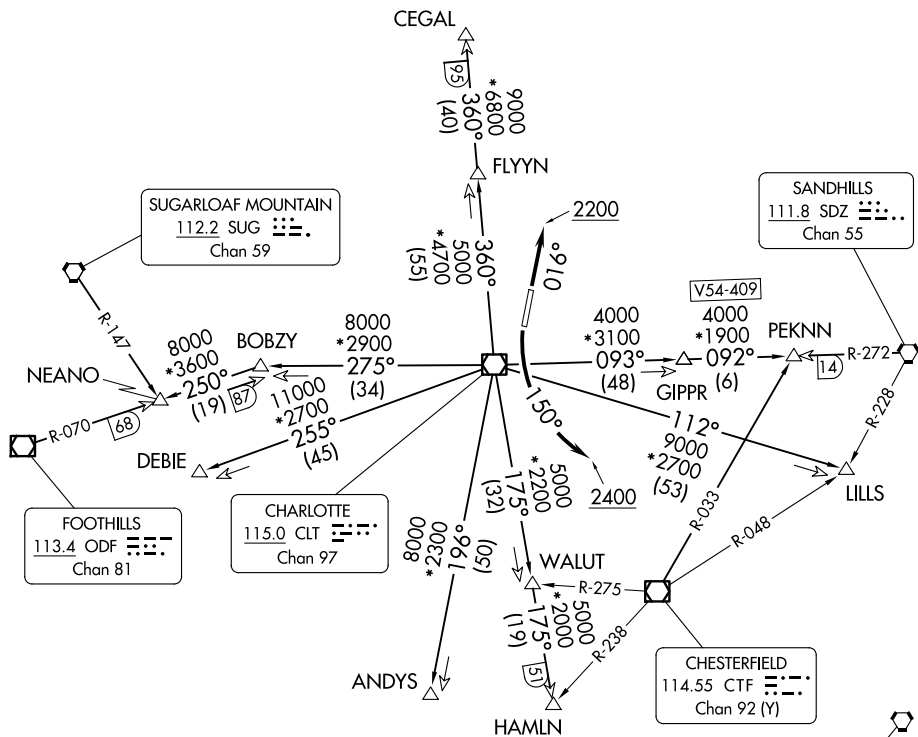
**TOP ALTITUDE:**  
3000

RADAR and DME required.

## TAKEOFF MINIMUMS

Rwy 2: Standard.

Rwy 20: Standard with minimum climb of 320' per NM to 2400.



NOTE: For propeller aircraft only.

NOTE: Turboprops: Operate in a manner that will result in best forward speed and climb rate.

NOTE: Transponder code will be issued via Concord ATCT or Charlotte clearance delivery.

NOTE: Chart not to scale.

(CONTINUED ON FOLLOWING PAGE)

## KNIGHTS THREE DEPARTURE

(KNI3.KNI) 21MAR24

CONCORD, NORTH CAROLINA  
CONCORD-PADGETT RGNL (JQF)

SE-2, 10 JUL 2025 to 07 AUG 2025

SE-2. 10 JUL 2025 to 07 AUG 2025