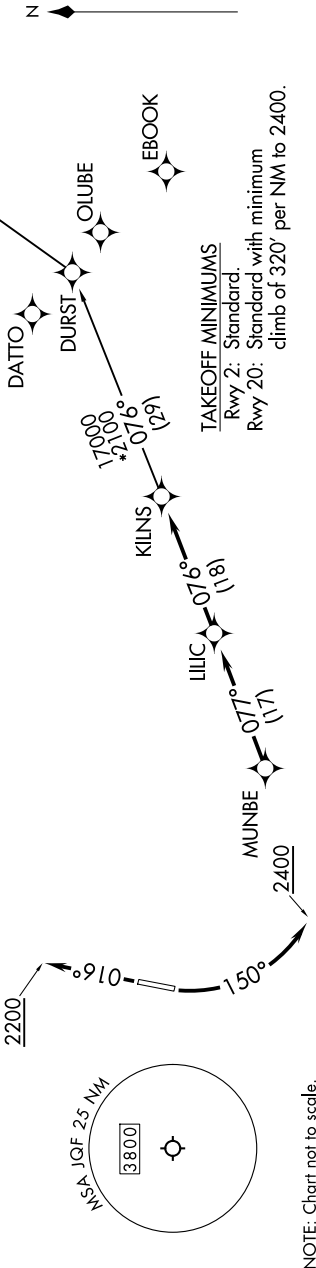


SE-2, 10 JUL 2025 to 07 AUG 2025

CHARLOTTE DEP CON 128.325 307.8 ATIS 133.675 CINC DEL 118.55 CINC DEL (when twr closed) 127.25 GND CON 121.85 CONCORD TOWER ★ 134.65 (CTAF) UNICOM 122.95	RNAV 1 - DME/DME/IRU or GPS. RADAR required.
--	---

NOTE: For turboprops only.
NOTE: Transponder code will be issued via PDC or Charlotte CINC DEL.
NOTE: Upon reaching 10000 MSL, accelerate to and maintain 280K, if unable advise ATC.
NOTE: If unable to accept climb rates, advise ATC on initial contact.



DEPARTURE ROUTE DESCRIPTION

TAKEOFF RUNWAY 2: Climb on heading 016° to 2200, then on heading assigned by ATC, thence. . .
TAKEOFF RUNWAY 20: Climbing left turn heading 150° to 2400, then on heading assigned by ATC, thence. . .

. . . on RADAR vectors to MUNBE, then on depicted route to KILNS, then on AUDII transition. Maintain 3000.
Expect clearance to filed altitude within 10 minutes after departure.

AUDII TRANSITION (KILNS5.AUDII)

SE-2, 10 JUL 2025 to 07 AUG 2025