

(KER4.KER) 25051
KERMIT FOUR DEPARTURE

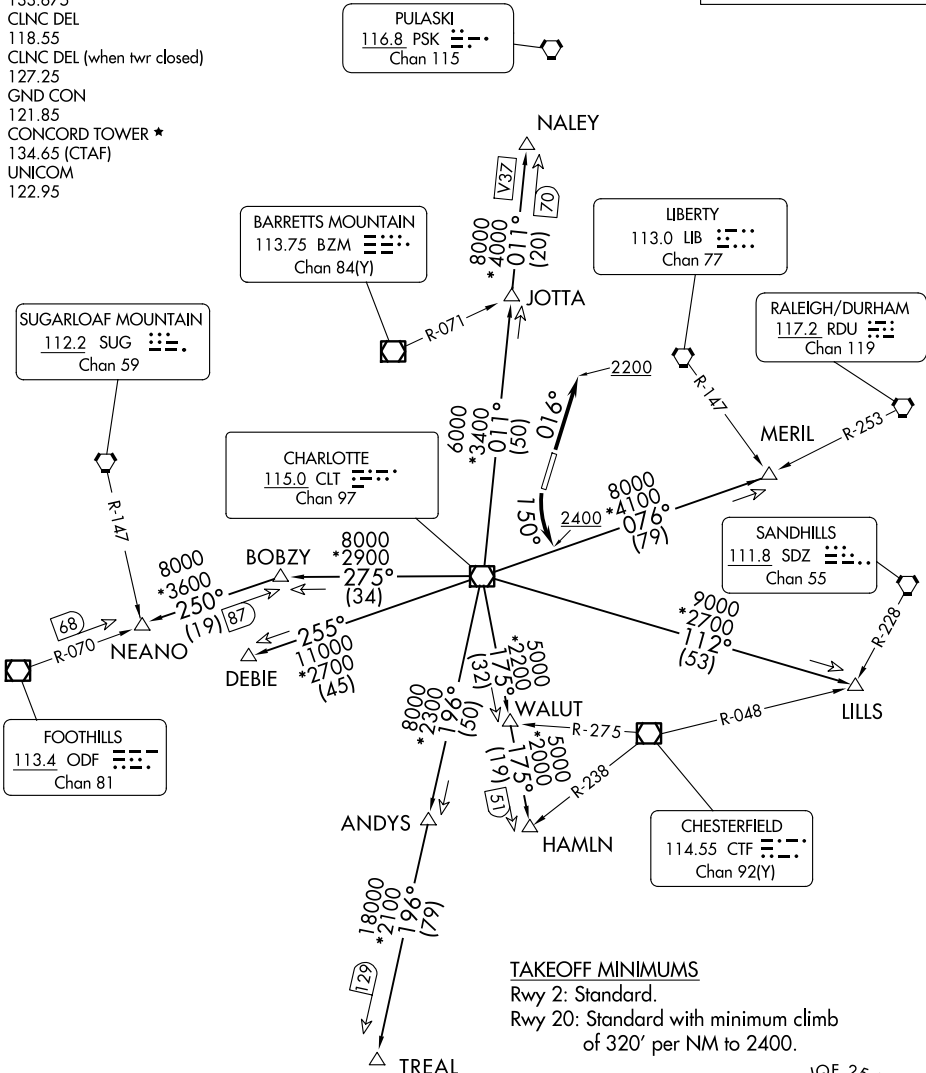
AL-9155 (FAA)

CONCORD-PADGETT RGNL (JQF)
CONCORD, NORTH CAROLINA

CHARLOTTE DEP CON
128.325 307.8
ATIS
133.675
CLNC DEL
118.55
CLNC DEL (when twr closed)
127.25
GND CON
121.85
CONCORD TOWER *
134.65 (CTAF)
UNICOM
122.95

RADAR and DME required.

TOP ALTITUDE:
3000



NOTE: For turbo jet aircraft only.
NOTE: Upon reaching 10000 MSL, accelerate to and maintain 280K, if unable advise ATC.
NOTE: Transponder code will be issued via Concord ATCT or Charlotte clearance delivery.

NOTE: Chart not to scale.

(CONTINUED ON FOLLOWING PAGE)

KERMIT FOUR DEPARTURE
(KER4.KER) 21MAR24

CONCORD, NORTH CAROLINA
CONCORD-PADGETT RGNL (JQF)

SE-2, 10 JUL 2025 to 07 AUG 2025

SE-2, 10 JUL 2025 to 07 AUG 2025