

LOC/DME I-JQF
111.95
Chan **56(Y)**

APP CRS
196°

Rwy Idg **6350**
TDZE **699**
Apt Elev **704**

ILS or LOC RWY 20
CONCORD-PADGETT RGNL (JQF)

DME or RADAR required for LOC only.

▼

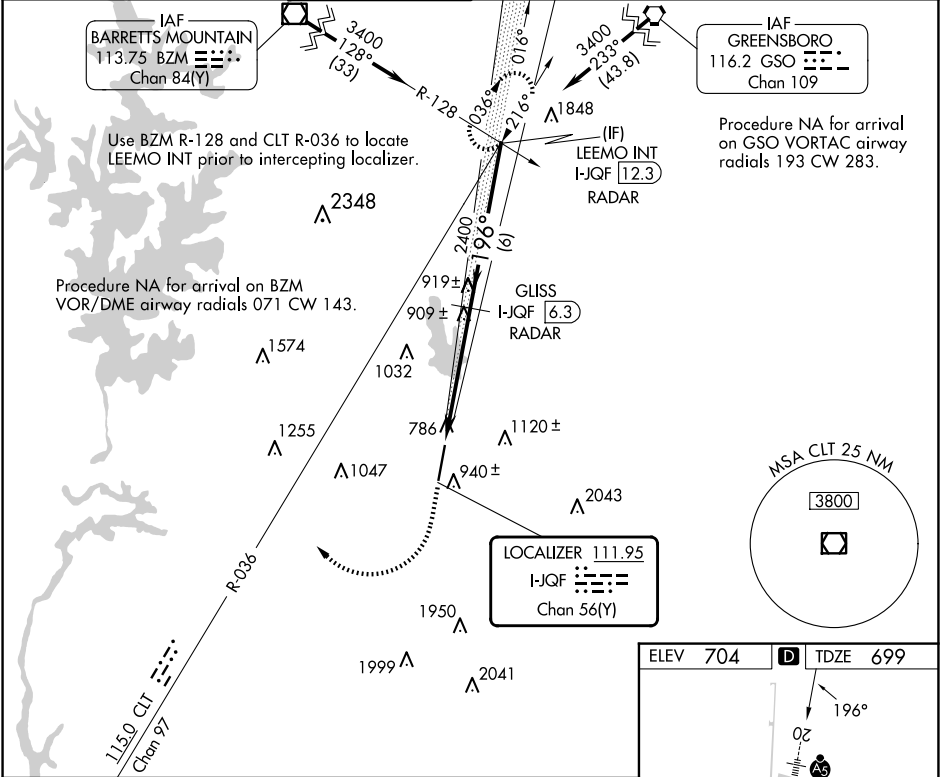
NA

For inop ALS, increase S-LOC 20 Cat A/B visibility to 1 SM, Cat C/D visibility to 1 3/4 SM. Rwy 20 helicopter visibility reduction below 3/4 SM NA. S-ILS inop table does not apply.

MALSRR

MISSED APPROACH: Climb to 1200 then climbing right turn to 3400 on heading 020° and CLT VOR/DME R-036 to LEEMO INT/I-JQF 12.3 DME/RADAR and hold.

ATIS 133.675	CHARLOTTE APP CON 128.325 307.8	CONCORD TOWER ★ 134.65 (CTAF)	GND CON 121.85	CLNC DEL 118.55	CLNC DEL 127.25 (when twr closed)	UNICOM 122.95
------------------------	---	---	--------------------------	---------------------------	--	-------------------------



1200

3400

CLT R-036

LEEMO INT

GLISS I-JQF 6.3 RADAR

LEEMO INT I-JQF 12.3 RADAR

* LOC only.

I-JQF 1.2

I-JQF 2.5

2400

3400

196°

GS 3.00° TCH 44

1.3

3.8 NM

6 NM

CATEGORY	A	B	C	D
S-ILS 20		1026-3/4 327 (400-3/4)		
S-LOC 20	1160-3/4 461 (500-3/4)		1160-1 461 (500-1)	
CIRCLING	1300-1 596 (600-1)		1480-2 1/4 776 (800-2 1/4)	1480-2 1/2 776 (800-2 1/2)

ELEV 704 TDZE 699

196°

020°

AS

TWR

7402 X 100

0.9% UP

2

TDZL Rwy 20

REIL Rwy 20

HIRL Rwy 2-20

FAF to MAP 5.1 NM

Knots	60	90	120	150	180
Min:Sec	5:06	3:24	2:33	2:02	1:42