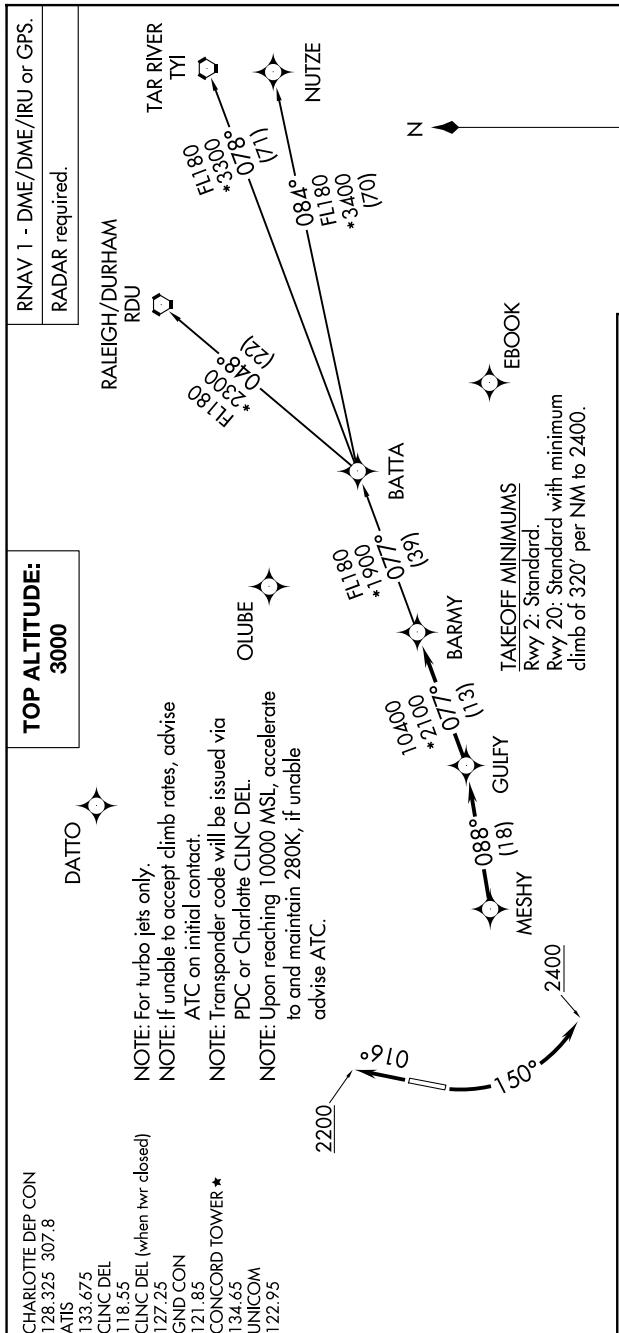


CONCORD, NORTH CAROLINA

NOTE: Chart not to scale.



## DEPARTURE ROUTE DESCRIPTION

TAKEOFF RUNWAY 2: Climb on heading 016° to 2200, then on heading assigned by ATC, then. . . .  
TAKEOFF RUNWAY 20: Climbing left turn heading 150° to 2400, then on heading assigned by ATC, then. . . .

... on RADAR vectors to MESH, then on depicted route to BARMY. Then on assigned transition. Maintain 3000, expect clearance to filed altitude within 10 minutes after departure.

NUTZE TRANSITION (BARMY5.NUTZE)  
RALEIGH/DURHAM TRANSITION (BARMY5.RDU)  
TAR RIVER TRANSITION (BARMY5.TYI)

CONCORD, NORTH CAROLINA  
CONCORD-PADGETT RGNL (JQF)

(BARMY5.BARMY) 21MAR24