

LA GRANGE, TEXAS

AL-9154 (FAA)

23166

WAAS CH 86929 W34A	APP CRS 336°	Rwy Idg TDZE Apt Elev	5000 324 324
--	------------------------	-----------------------------	---

RNAV (GPS) RWY 34
FAYETTE RGNL AIR CENTER (3T5)

FAYETTE RGNL AIR CENTER (3T5)

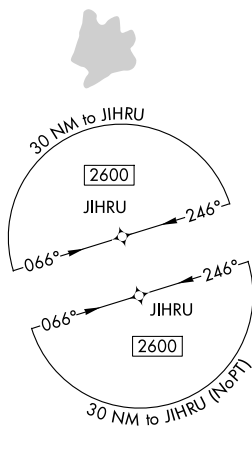
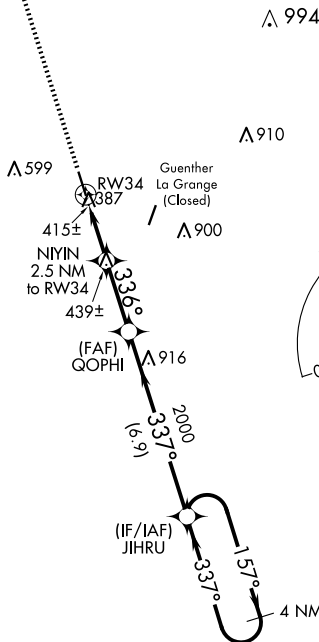
RNP APCH.

- T** When local altimeter setting not received, use Giddings-Lee altimeter setting and increase all MDA 60 feet, increase LP and LNAV Cat C visibility ¼ mile.
A Rwy 34 helicopter visibility reduction below ¾ SM NA.

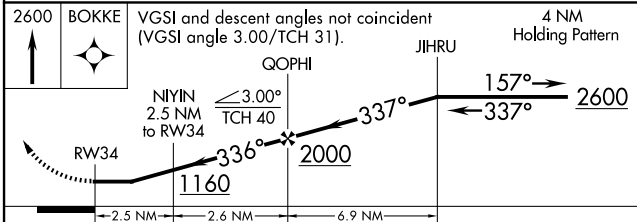
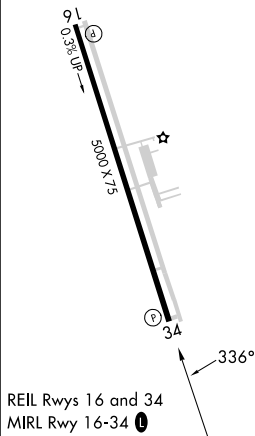
MISSED APPROACH: Climb to 2600
direct BOKKE and hold.

AWOS-3 124.175	AUSTIN APP CON 120.875 270.25	GCO 121.725	UNICOM 122.7 (CTAF) 0
--------------------------	---	-----------------------	---------------------------------

MISSED APCH FIX



ELEV 324		TDZE 324
----------	--	----------



CATEGORY	A	B	C	D
LP MDA	700-1 376 (400-1)			NA
LNAV MDA	740-1 416 (500-1)	740-1 $\frac{1}{8}$ 416 (500-1 $\frac{1}{8}$)		NA

LA GRANGE, TEXAS
Amdt 2C 07NOV19

29°54'N-96°57'W

FAYETTE RGNL AIR CENTER (3T5)
RNAV (GPS) RWY 34

SC-5, 10 JUL 2025 to 07 AUG 2025