

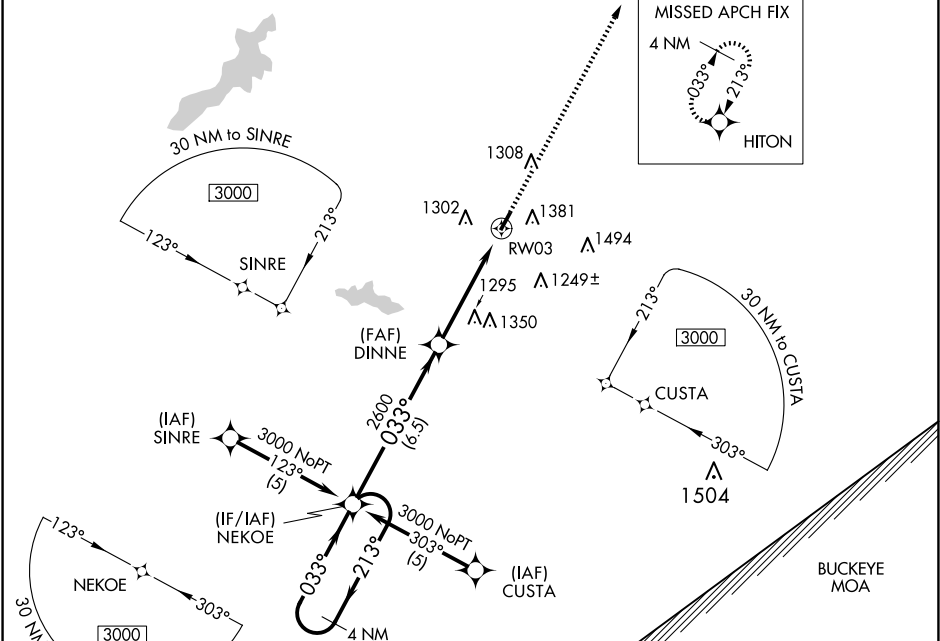
APP CRS	Rwy Idg	3579
033°	TDZE	1033
	Apt Elev	1033

RNAV (GPS) RWY 3

CLINTON FLD (I66)

RNP APCH.	MISSED APPROACH: Climb to 3000 direct HITON and hold.
▼ ▲ NA	If local altimeter setting not received, use Wilmington Air Park altimeter setting and increase all MDAs 20 feet. Rwy 3 helicopter visibility reduction below ¾ SM NA.

AWOS-3 124.175	COLUMBUS APP CON 118.85 269.275	UNICOM 122.725 (CTAF) 1
-------------------	------------------------------------	----------------------------



ELEV 1033	TDZE 1033
-----------	-----------

