

WAAS CH 93910 W27A	APP CRS 272°	Rwy Idg 4300 TDZE 22 Apt Elev 22
--	------------------------	---

RNAV (GPS) RWY 27L

NORTH PALM BEACH COUNTY GENERAL AVIATION (F45)

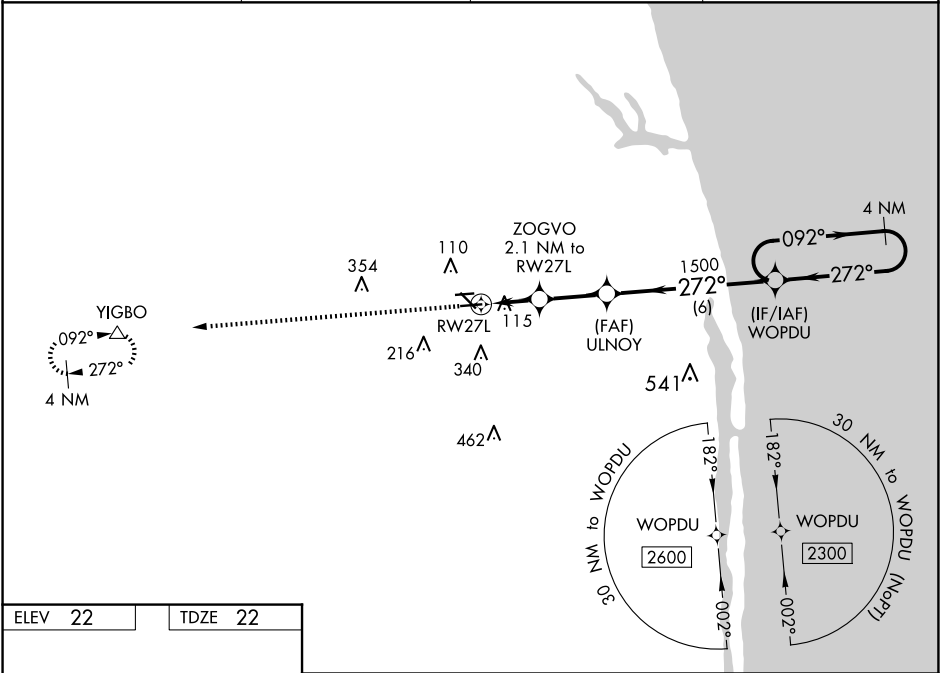
▼

▲ NA

Circling NA to Rwy 9L and 27R. For uncompensated Baro-VNAV systems, LNAV/VNAV NA below -1.5°C (5°F) or above 54°C (130°F). Baro-VNAV and VDP NA when using Palm Beach Init altimeter setting. DME/DME RNP-0.3 NA. When local altimeter not received, use Palm Beach Init altimeter setting and increase LPV DA to 369 feet and all visibilities ½ SM; increase LNAV/VNAV DA to 423 feet and all visibilities ½ SM; increase all MDA 40 feet and Cat C/D visibility ½ SM. Rwy 27L helicopter visibility reduction below ¾ SM NA.

MISSED APPROACH:
Climb to 2500 direct YIGBO and hold.

AWOS-3 119.975	PALM BEACH APP CON 128.3 317.4	CLNC DEL 120.825	UNICOM 123.075 (CTAF) 0
--------------------------	--	----------------------------	-----------------------------------



ELEV 22

TDZE 22

Diagram showing RWY 27L and RWY 27R. RWY 27L is 4300' x 75' with a 3679' x 75' section. RWY 27R is 4300' x 100' with a 4300' x 75' section. The diagram also shows the location of RWY 27L and RWY 27R relative to the airport.

MIRL Rwy 9R-27L and 14-32
REIL Rwy 9R, 14, 27L and 32

2500	YIGBO	2300	WOPDU	4 NM Holding Pattern
*LNAV only.	ZOGVO 2.1 NM to RW27L	ULNOY 1500	WOPDU 2300	GP 3.00° TCH 40
	*1 NM to RW27L	*720	1500	
	1 NM	1.1 NM	2.4 NM	6 NM
CATEGORY	A	B	C	D
LPV DA	341-7/8	319 (400-7/8)		
LNAV/VNAV DA	395-1	373 (400-1)		
LNAV MDA	380-1	358 (400-1)		
CIRCLING	460-1 438 (500-1)	480-1 458 (500-1)	700-2 678 (700-2)	720-2 1/4 698 (700-2 1/4)