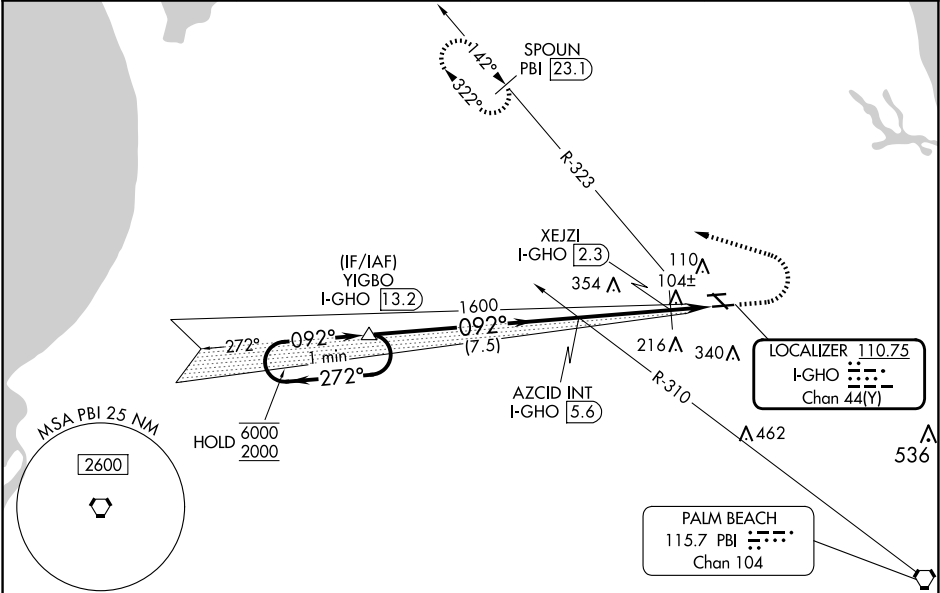
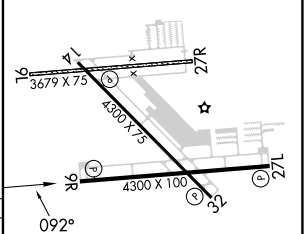


DME required.		MISSED APPROACH: Climb to 1200 then climbing left turn 2000 on hdg 294° and on PBI VORTAC R-323 to SPOUN/I-PBI 23.1 DME and hold.	
<div><div></div><div></div></div> <div>Circling NA to Rwys 9L and 27R. Rwy 9R helicopter visibility reduction below ¼ SM NA.</div>			
AWOS-3 <b>119.975</b>	PALM BEACH APP CON <b>128.3 317.4</b>	CLNC DEL <b>120.825</b>	UNICOM <b>123.075</b> (CTAF) <b>0</b>



VGSI and ILS glidepath not coincident (VGSI Angle 3.00/TCH 40).		1200	2000	PBI R-323	SPOUN PBI 23.1	ELEV 22	TDZE 22
One Minute Holding Pattern		↑	hdg 294°				
YIGBO I-GHO 13.2		AZCID INT I-GHO 5.6		XEJZI I-GHO 2.3		I-GHO 0.8	
6000 ← 272°		092° →		1600		520	
2000		1600		7.5 NM		3.3 NM	
GS 3.00° TCH 43				1.5 NM			
CATEGORY	A	B	C	D			
S-ILS 9R	272-¾		250 (300-¾)				
S-LOC 9R	520-1	498 (500-1)	520-1⅜	498 (500-1⅜)			
CIRCLING	520-1	498 (500-1)	640-2 618 (700-2)	720-2¼ 698 (700-2¼)			
XEJZI FIX MINIMUMS							
S-LOC 9R	360-1	338 (400-1)	360-1⅝	338 (400-1⅝)			
CIRCLING	440-1 418 (500-1)	480-1 458 (500-1)	640-2 618 (700-2)	720-2¼ 698 (700-2¼)			
WEST PALM BEACH, FLORIDA		NORTH PALM BEACH COUNTY GENERAL AVIATION (F45)		ILS or LOC RWY 9R			
Amdt 3 17APR25		26°51'N-80°13'W					



MRL Rwy 9R-27L and 14-32		REIL Rwy 9R, 14, 27L and 32			
FAF to MAP 4.8 NM					
Knots	60	90	120	150	180
Min:Sec	4:48	3:12	2:24	1:55	1:36