

WAAS CH 53624 W19A	APP CRS 188°	Rwy Idg 5000 TDZE 431 Apt Elev 436
--	------------------------	---

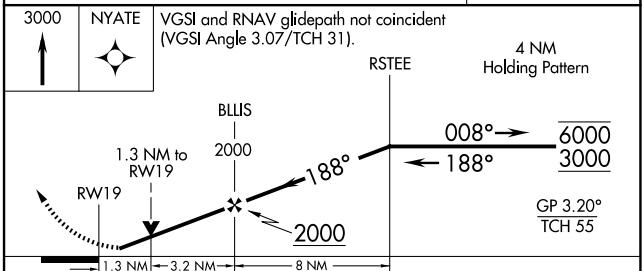
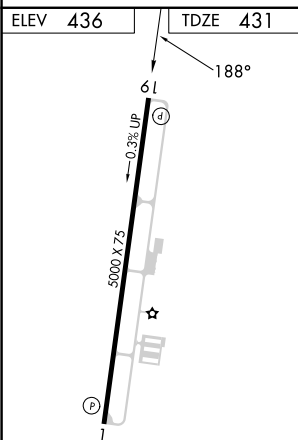
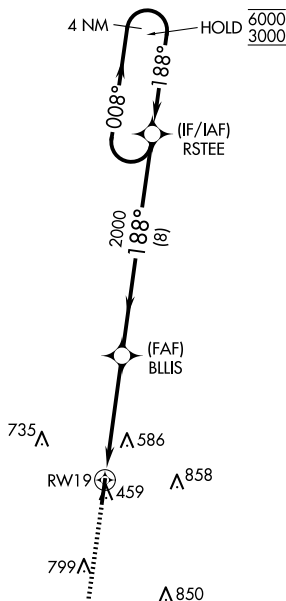
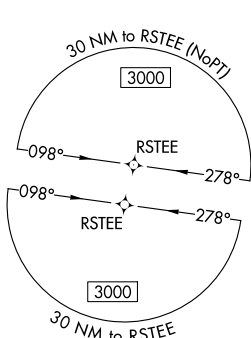
RNAV (GPS) RWY 19

RNP APCH - GPS.

- V** Baro-VNAV and VDP NA when using Memphis Intl altimeter setting. Rwy 19 helicopter visibility reduction below $\frac{3}{4}$ SM NA. When local altimeter setting not received, use Memphis Intl altimeter setting: increase LPV DA to 817 feet and all visibilities $\frac{3}{8}$ SM, increase LNAV/VNAV DA to 779 feet; increase all MDA 100 feet and visibility LNAV Cat C $\frac{3}{8}$ SM and Circling Cat C $\frac{1}{2}$ SM.

MISSED APPROACH:
Climb to 3000 direct
NYATE and hold.

AWOS-3 119.875	MEMPHIS APP CON 125.8 338.3	CTAF 122.9
--------------------------	---------------------------------------	----------------------



CATEGORY		A		B		C		D	
LPV	DA	721-1		290 (300-1)				NA	
LNAV/ VNAV	DA	683-1		252 (300-1)				NA	
LNAV	MDA	880-1		449 (500-1)		880-1 $\frac{3}{8}$ 449 (500-1 $\frac{3}{8}$)		NA	
CIRCLING		900-1 464 (500-1)		920-1 484 (500-1)		1160-2 724 (800-2)		NA	

SOMERVILLE, TENNESSEE
Amdt 2D 23FEB23

35°12'N-89°24'W

FAYETTE COUNTY (FYE)
RNAV (GPS) RWY 19

SE-1, 10 JUL 2025 to 07 AUG 2025