

WAAS CH <b>93723</b> <b>W01A</b>	APP CRS <b>008°</b>	Rwy Idg TDZE <b>436</b> Apt Elev <b>436</b>	<b>5000</b>
--	------------------------	---	-------------

RNAV (GPS) RWY 1

FAYETTE COUNTY (FYE)

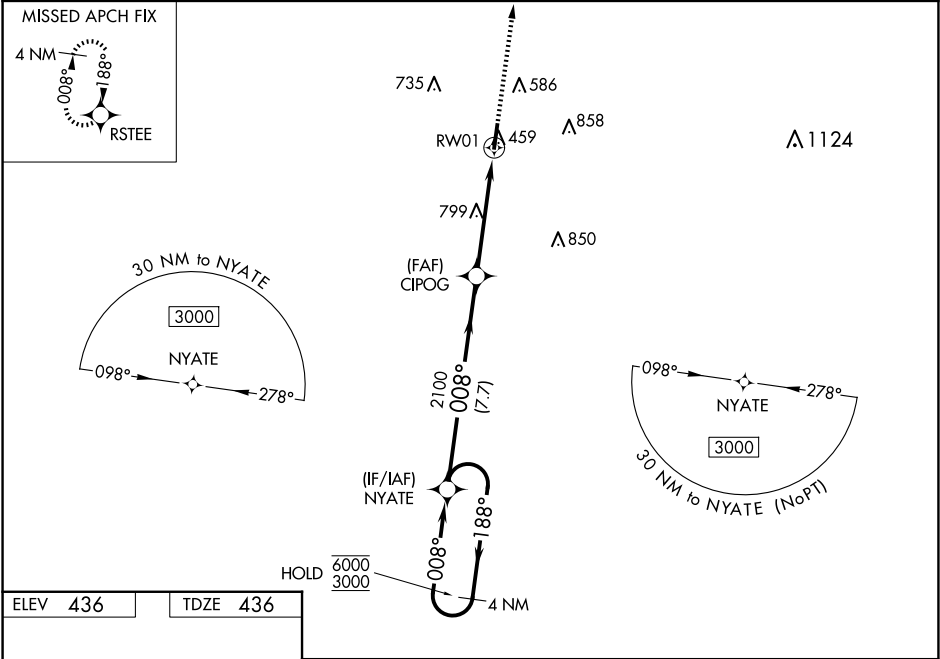
RNP APCH - GPS.

▼

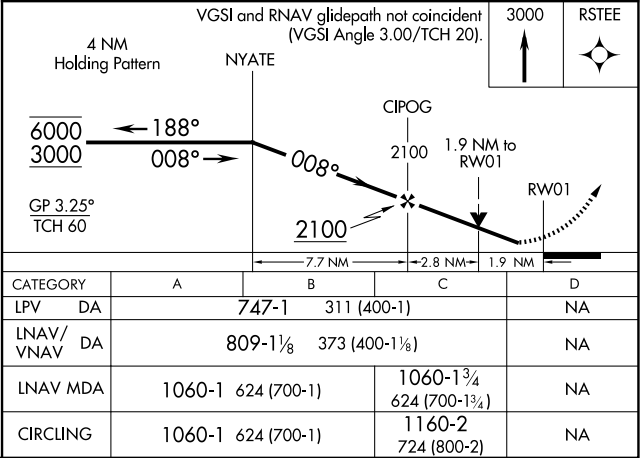
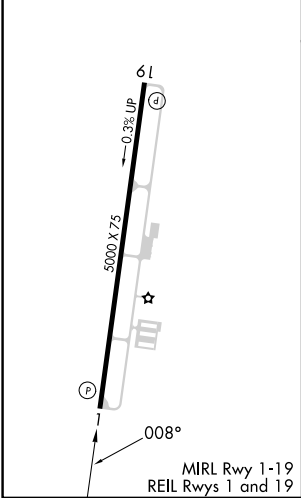
Baro-VNAV and VDP NA when using Memphis Intl altimeter setting. Rwy 1 helicopter visibility reduction below ¾ SM NA. For uncompensated Baro-VNAV systems, LNAV/VNAV NA below -1.5°C or above 54°C. When local altimeter setting not received, use Memphis Intl altimeter setting: increase LPV DA to 843 feet and all visibilities ⅛ SM; increase LNAV/VNAV DA to 905 feet and all visibilities ⅛ SM; increase all MDA 100 feet and visibility LNAV Cat C ¼ SM and Circling Cat C ½ SM.

MISSED APPROACH:  
Climb to 3000 direct RSTEE and hold.

AWOS-3 <b>119.875</b>	MEMPHIS APP CON <b>125.8 338.3</b>	CTAF <b>122.9</b>
--------------------------	---------------------------------------	----------------------



ELEV <b>436</b>	TDZE <b>436</b>
-----------------	-----------------



SE-1, 10 JUL 2025 to 07 AUG 2025

SE-1, 10 JUL 2025 to 07 AUG 2025