

WAAS CH 90437 W32A	APP CRS 317°	Rwy Idg 5006 TDZE 1162 Apt Elev 1162
--	------------------------	---

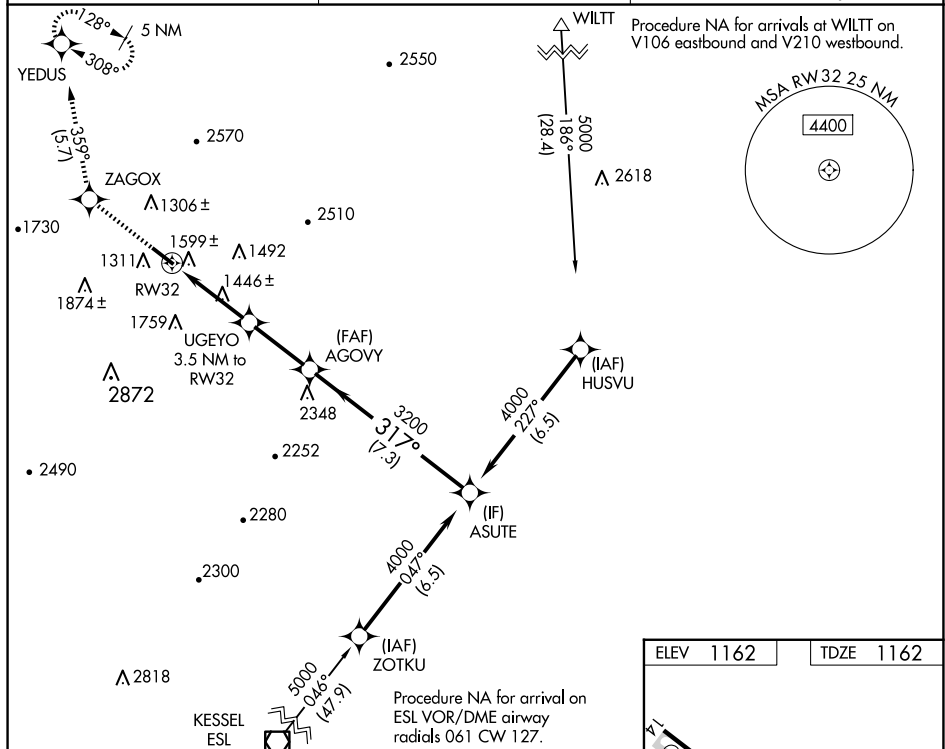
RNAV (GPS) RWY 32
BEDFORD COUNTY (HMZ)

RNP APCH - GPS.

T Rwy 32 helicopter visibility reduction below $\frac{3}{4}$ SM NA. VDP NA when using Altoona altimeter setting. When local altimeter setting not received, use Altoona altimeter setting and increase all MDA 100 feet, increase LP Cat C visibility $\frac{1}{4}$ SM, increase LNAV Cat B visibility $\frac{1}{4}$ SM and Cat C visibility $\frac{1}{2}$ SM, and increase Circling Cts A and B visibility $\frac{1}{4}$ SM.

MISSED APPROACH: Climb to 5000 direct ZAGOX and on track 359° to YEDUS and hold, continue climb-in-hold to 5000.

AWOS-3 123.675	JOHNSTOWN APP CON ★ 121.2 299.2	UNICOM 122.7 (CTAF) 0
--------------------------	---	---------------------------------



<p>5000 ZAGOX tr 359° YEDUS UGEYO 3.5 NM to RW32 3.58 TCH 50 AGOVY 3200 ASUTE 4000 317° 1.2 NM 2.3 NM 2.8 NM 7.3 NM</p>						
CATEGORY		A		B	C	D
LP MDA		1740-1		578 (600-1)	1740-1½ 578 (600-1½)	NA
LNAV MDA		1860-1		698 (700-1)	1860-2 698 (700-2)	NA
CIRCLING		1900-1 738 (800-1)		1960-1 798 (800-1)	2200-3 1038 (1100-3)	NA

