



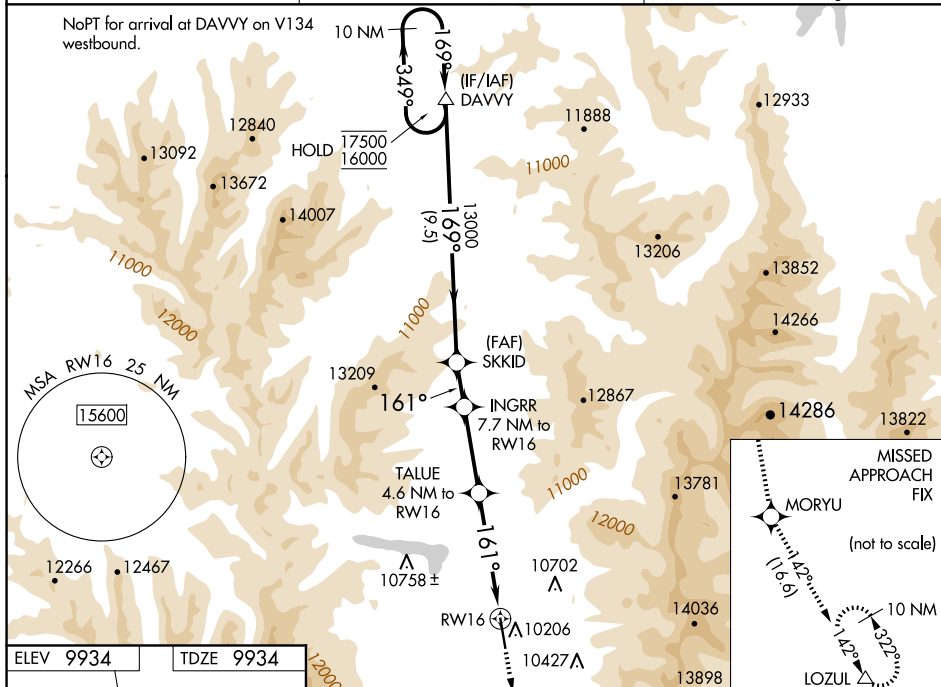
WAAS CH 63142 W16A	APP CRS 161°	Rwy Ldg TDZE Apt Elev	6400 9934 9934
--	------------------------	-----------------------------	---

RNAV (GPS) RWY 16
LAKE COUNTY (LXV)

RNP APCH-GPS.
<div style="display: flex; align-items: center;"> <div style="margin-right: 10px;">   </div> <div> <p>Baro-VNAV NA.</p> <p>When local altimeter setting not received, procedure NA.</p> </div> </div>

MISSED APPROACH: Climb to 16000 direct MORYU and on track 142° to LOZUL and hold, continue climb-in-hold to 16000.
#Missed approach requires minimum climb of 240 feet per NM to 12500.

ASOS 118.375	DENVER CENTER 119.85 363.15	UNICOM 122.8 (CTAF) L
------------------------	---------------------------------------	---------------------------------



ELEV 9934		TDZE 9934
-----------	--	-----------

