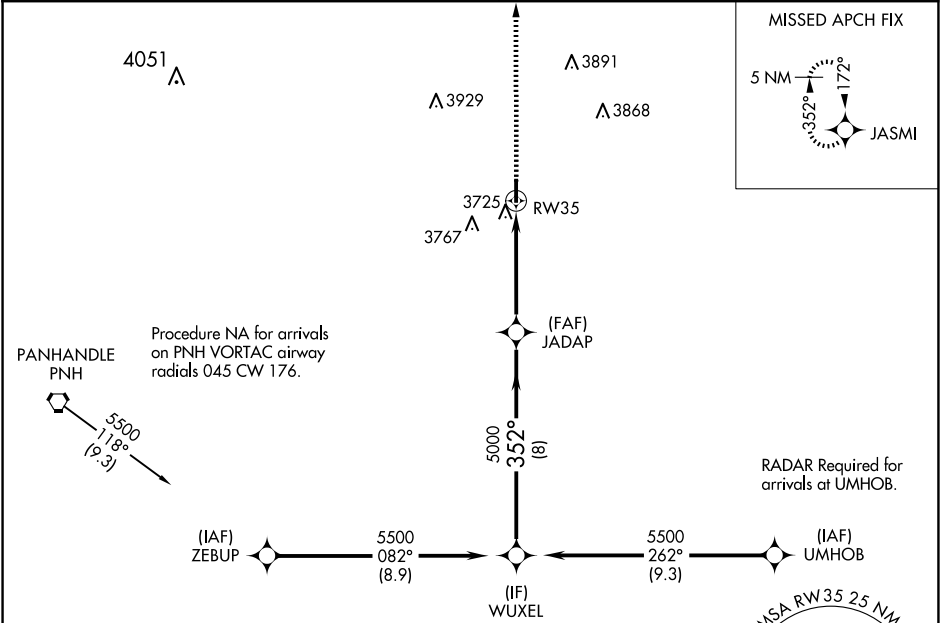


APP CRS	Rwy Idg	4404
352°	TDZE	3454
	Apt Elev	3454

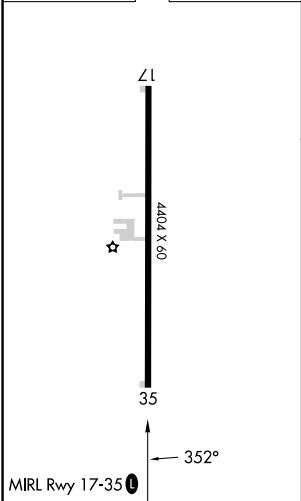
RNAV (GPS) RWY 35
PANHANDLE-CARSON COUNTY (T45)

RNP APCH - GPS.	MISSED APPROACH: Climb to 5500 direct JASMI and hold.
Use Rick Husband Amarillo Intl altimeter setting; when not received, use Hutchinson County altimeter setting and increase all MDA 40 feet; increase LNAV Cat C visibility to 2. Rwy 35 helicopter visibility reduction below ¾ SM NA.	

AMA ASOS 118.85 350.3	AMARILLO APP CON ★ 119.5 307.0	UNICOM 122.7 (CTAF)	123.5
--------------------------	-----------------------------------	------------------------	-------



ELEV	3454	TDZE	3454
------	------	------	------



5500

↑

JASMI

✦

WUXEL

5500

JADAP

✕

5000

352°

3.00°

TCH 45

RW35

4.7 NM

8 NM

CATEGORY	A	B	C	D
LNAV MDA	4100-1	646 (700-1)	4100-1 ⁷ / ₈ 646 (700-1 ⁷ / ₈)	NA
CIRCLING	4140-1	686 (700-1)	4140-2 686 (700-2)	NA

SC-2, 10 JUL 2025 to 07 AUG 2025

SC-2, 10 JUL 2025 to 07 AUG 2025