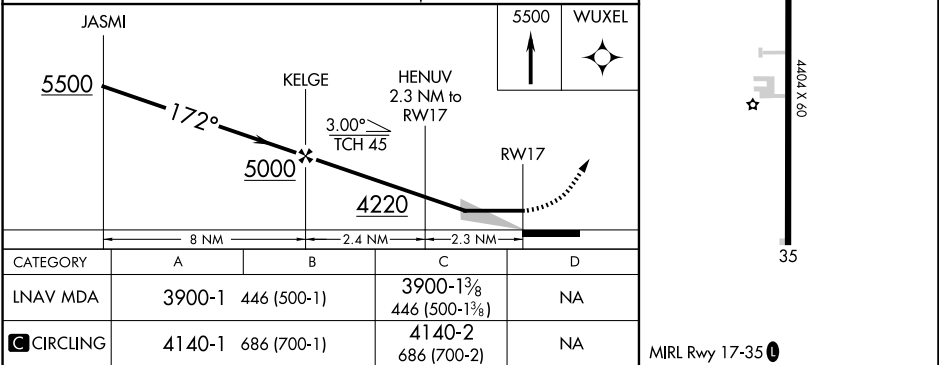
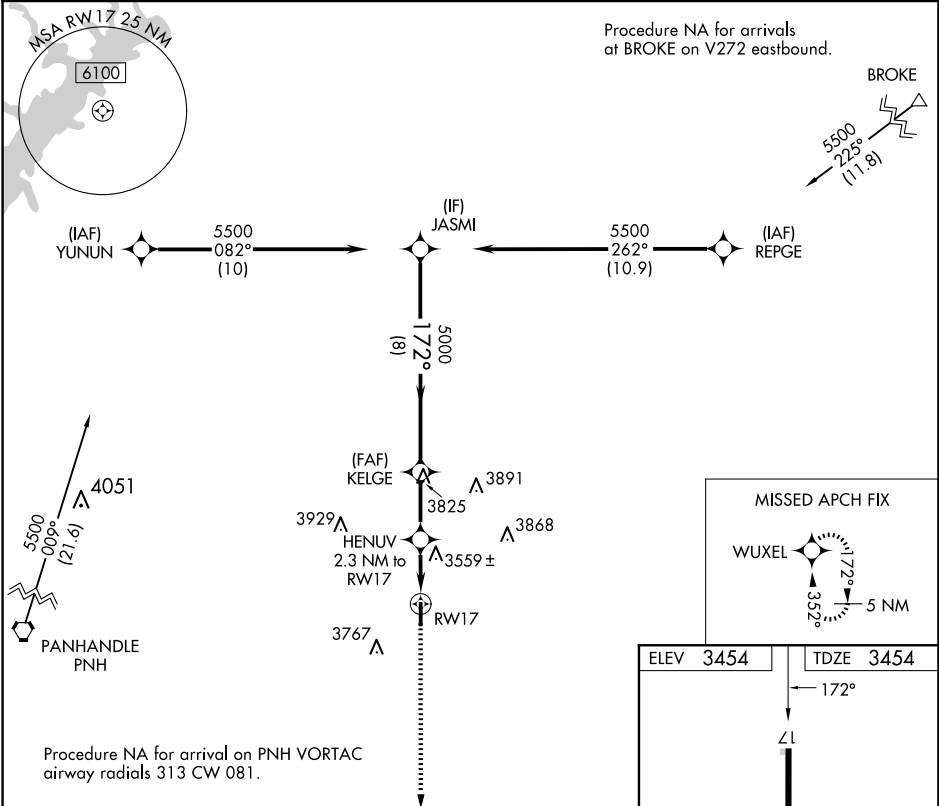


APP CRS	Rwy Idg	4404
172°	TDZE	3454
	Apt Elev	3454

RNAV (GPS) RWY 17
PANHANDLE-CARSON COUNTY (T45)

RNP APCH - GPS.		MISSED APPROACH: Climb to 5500 direct WUXEL and hold.	
▼ Use Rick Husband Amarillo Intl altimeter setting; when not received, use Borger altimeter setting and increase all MDA 40 feet.			
AMA ASOS	AMARILLO APP CON ★	UNICOM	123.5 0
118.85 350.3	119.5 307.0	122.7 (CTAF)	



SC-2, 10 JUL 2025 to 07 AUG 2025

SC-2, 10 JUL 2025 to 07 AUG 2025