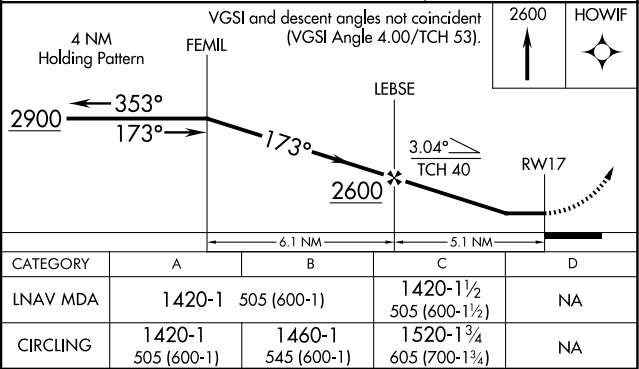
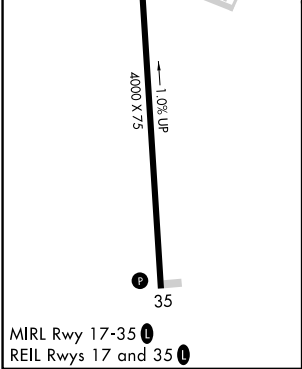
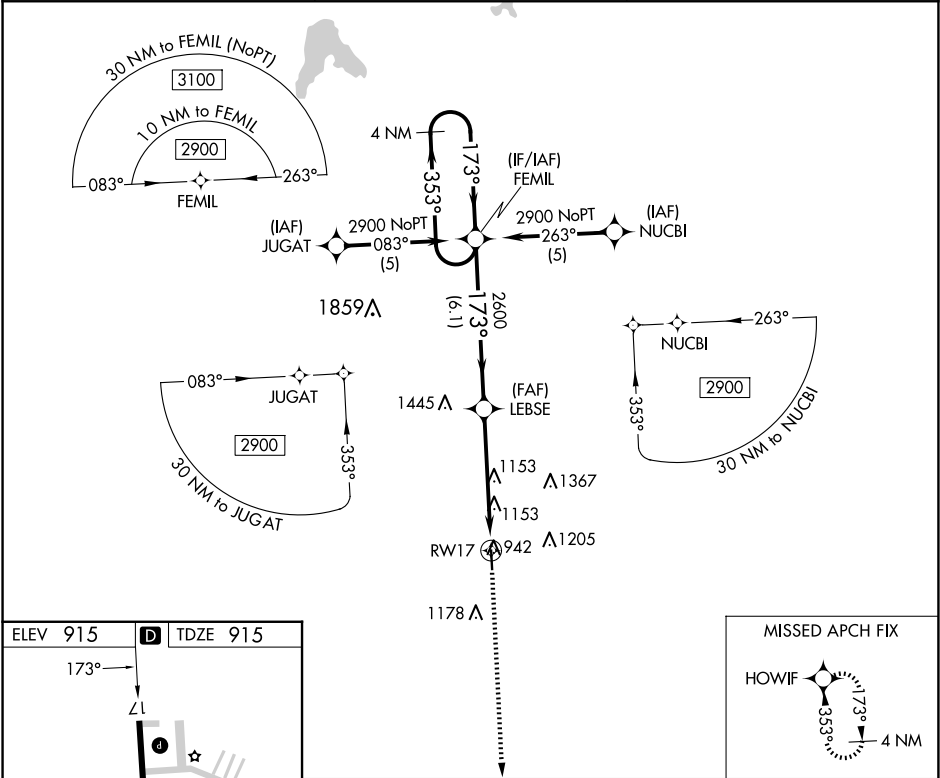


APP CRS	Rwy Idg	4000
173°	TDZE	915
	Apt Elev	915

RNAV (GPS) RWY 17  
LAWRENCE SMITH MEML (L.R.Y)

RNP APCH.	MISSED APPROACH: Climb to 2600 direct HOWIF and hold.
▼ When local altimeter setting not received, use Kansas City Downtown/Wheeler Fld altimeter setting: increase all MDAs 100 feet and visibility Cat C ¼ mile. ▲ Procedure NA at night. Rwy 17 helicopter visibility reduction below 1 SM NA.	

AWOS-3PT 119.975	KANSAS CITY CENTER 125.55 327.0	UNICOM 123.0 (CTAF) 0
---------------------	------------------------------------	--------------------------



NC-3, 10 JUL 2025 to 07 AUG 2025

NC-3, 10 JUL 2025 to 07 AUG 2025