

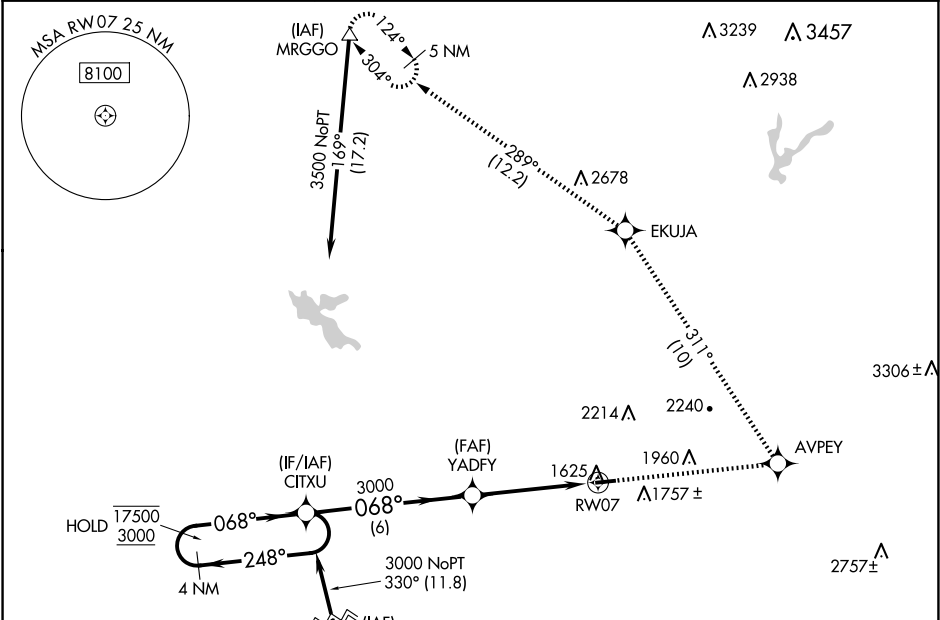
WAAS CH <b>90515</b> <b>W07A</b>	APP CRS <b>068°</b>	Rwy Idg TDZE <b>1532</b> Apt Elev <b>1538</b>
--	------------------------	---

RNAV (GPS) RWY 7

AUBURN MUNI (AUN)

RNP APCH. ▼ Circling Rwy 25 NA at night. Rwy 7 helicopter visibility reduction below ¾ SM NA. For uncompensated Baro-VNAV systems, LNAV/VNAV NA below -18°C or above 54°C. ▲	MISSED APPROACH: Climb to 5000 direct AVPEY and left turn on track 311° to EKUJA and on track 289° to MRGGO and hold.
--	---

AWOS-3 <b>119.375</b>	NORCAL APP CON <b>125.4 317.5</b>	UNICOM <b>122.7 (CTAF) 0</b>
--------------------------	--------------------------------------	---------------------------------



VGSI and RNAV glidepath not coincident (VGSI Angle 3.00/TCH 21).		5000		AVPEY	EKUJA	MRGGO
4 NM Holding Pattern		CITXU	YADFY	*LNAV only		
17500 3000		3000		*1.8 NM to RW07		
GP 3.00° TCH 45		3000		RW07		
6 NM		2.7 NM		1.8 NM		
CATEGORY	A	B	C	D		
LPV DA	1848-1¼	316 (400-1¼)	NA			
LNAV/VNAV DA	1968-1¾	436 (500-1¾)	NA			
LNAV MDA	2100-1	568 (600-1)	NA			
CIRCLING	2200-1 662 (700-1)	2400-1¼ 862 (900-1¼)	NA			
MIRL Rwy 7-25						

SW-2, 10 JUL 2025 to 07 AUG 2025

SW-2, 10 JUL 2025 to 07 AUG 2025