

WAAS
CH **65902**
W30A

APP CRS
300°

Rwy Idg
TDZE
Apt Elev
4500
55
79

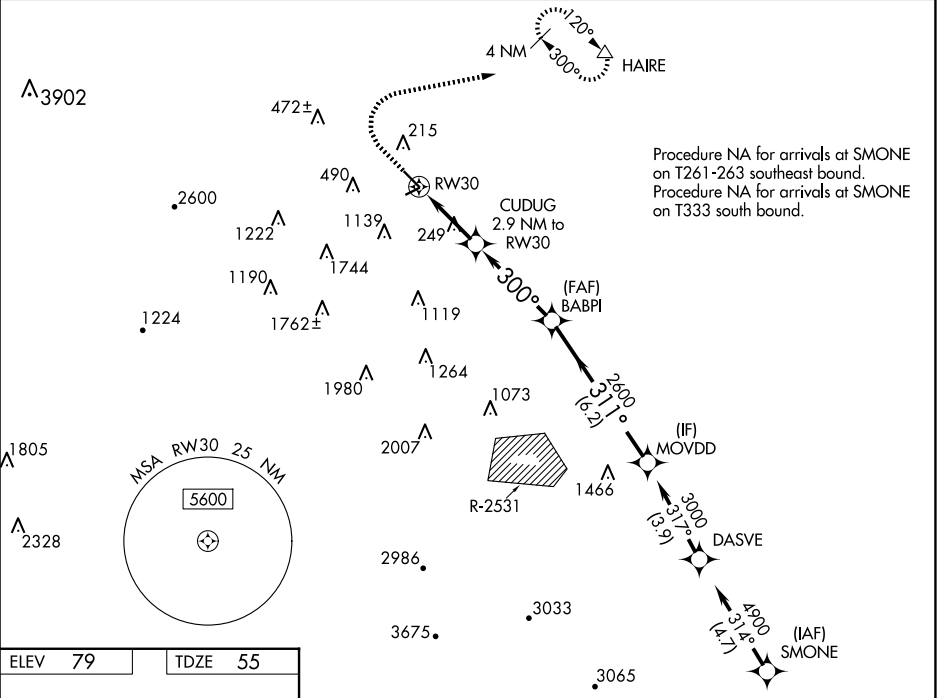
RNAV (GPS) RWY 30

BYRON (C83)

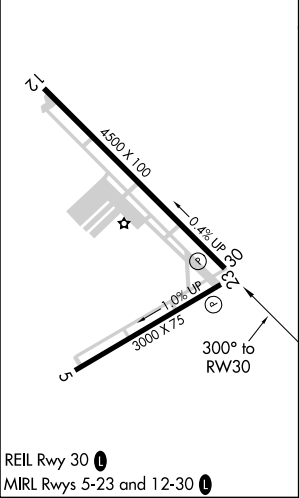
RNP APCH.
For uncompensated Baro-VNAV systems, LNAV/VNAV NA below -15°C (5°F) or above 15°C (59°F). Circling NA southwest of Rwy 12-30.

MISSED APPROACH: Climb to 1000, then climbing right turn 4000 direct HAIRE and hold, continue climb-in-hold 4000.

AWOS-3 123.775	NORCAL APP CON 123.85 278.3	UNICOM 123.050 (CTAF)
--------------------------	---------------------------------------	---------------------------------



ELEV 79	TDZE 55
---------	---------



1000

↑

4000

↗

HAIRE

△

VGSI and RNAV glidepath not coincident (VGSI Angle 3.50/ TCH 25).

*LNAV only

MOVDD

3000

311°

2600

300°

1140*

GP 3.50°

TCH 31

CUDUG 2.9 NM to RW30

BABPI 2600

* 1.1 NM to RW30

1.1 NM

1.8 NM

3.9 NM

6.2 NM

CATEGORY	A	B	C	D
LPV DA	325-7/8 270 (300-7/8)			
LNAV/VNAV DA	404-1 3/8 349 (400-1 3/8)			
LNAV MDA	500-1	445 (500-1)	500-1 3/8	445 (500-1 3/8)
CIRCLING	600-1	521 (600-1)	680-1 3/4 601 (700-1 3/4)	820-2 1/2 741 (800-2 1/2)

RNAV (GPS) RWY 30