

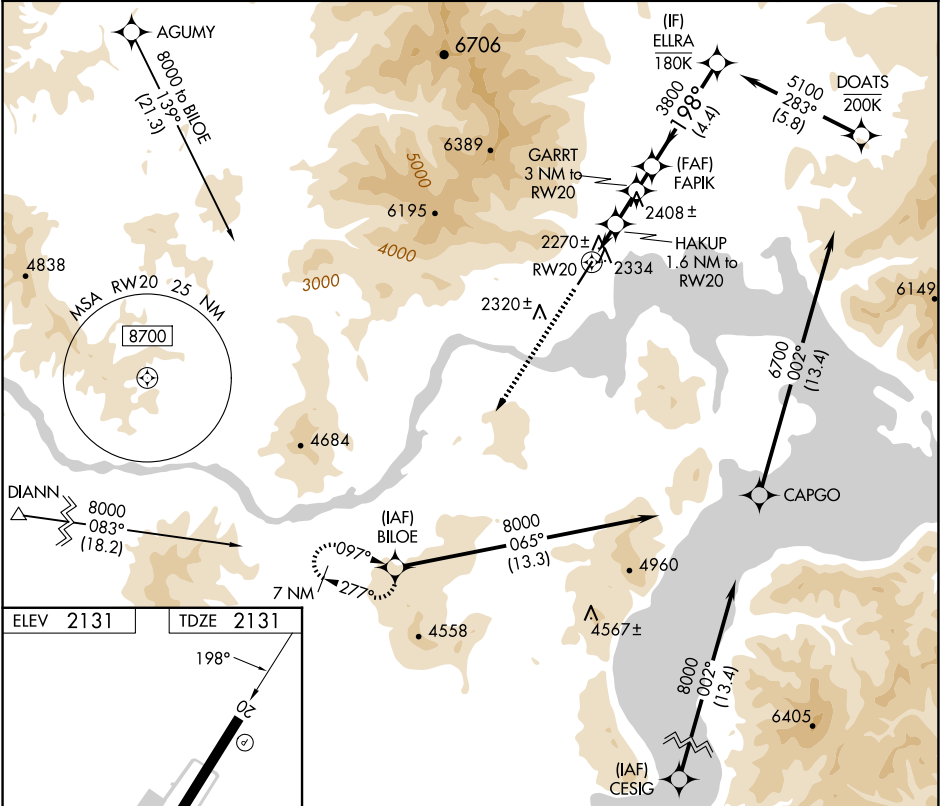
WAAS CH 99542 W20A	APP CRS 198°	Rwy Ldg TDZE Apt Elev	5501 2131 2131
--	------------------------	-----------------------------	---

RNAV (GPS) Z RWY 20

SANDPOINT (SZT')

RNP APCH.	MISSED APPROACH: Climb to 6600 direct BILOE and hold, continue climb-in-hold to 6600. * Missed approach requires minimum climb of 318 feet per NM to 4500; if unable to meet climb gradient, see RNAV (GPS) Y RWY 20.
<div><div>▼</div><div>⚠</div><div>❄</div></div> <div>Rwy 20 helicopter visibility reduction below ¾ SM NA. When local altimeter not received, procedure NA. -16°C</div>	

AWOS-2 135.425	SEATTLE CENTER 123.95 290.55	UNICOM 122.7 (CTAF) ①
--------------------------	--	---------------------------------



ELEV 2131	TDZE 2131				
<div><div>198°</div><div>5501 x 75</div><div>②</div></div>					
MIRL Rwy 2-20 ①					
REIL Rwy 2 and 20 ①					
6600 BILOE		VGSI and descent angles not coincident (VGSI Angle 3.75/TCH 50).			
ELLRA		5100			
HAKUP 1.6 NM to RW20		GARRT 3 NM to RW20			
0.9 NM to RW20		FAPIK			
2820		3380			
0.9 NM		0.7 NM		1.4 NM	
1 NM		4.4 NM			
CATEGORY	A	B	C	D	
LP MDA*	2520-1	389 (400-1)	2520-1½ 389 (400-1½)	NA	