




WAAS CH 63146 W02A	APP CRS 034°	Rwy Ldg 5501 TDZE 2131 Apt Elev 2131
--	------------------------	---

RNAV (GPS) Z RWY 2
SANDPOINT (SZT)

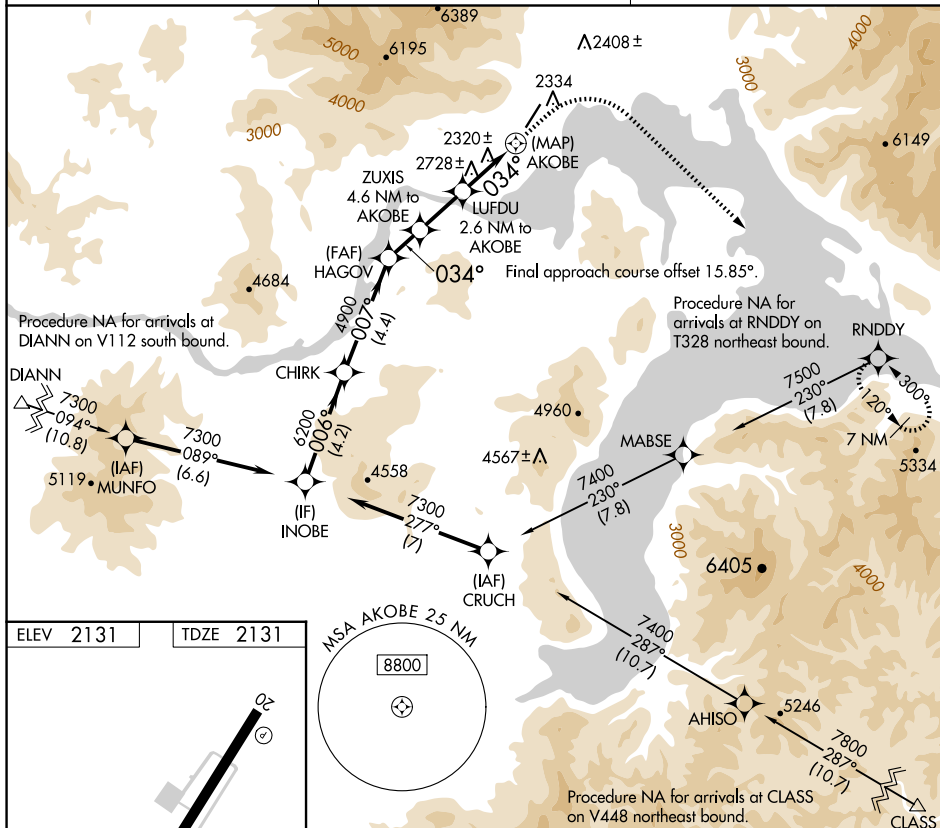
RNP APCH - GPS.

   -16°C

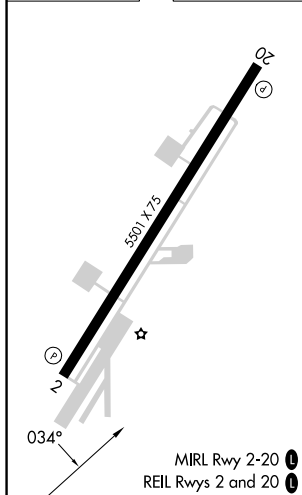
Rwy 2 helicopter visibility reduction below 1 SM NA.
Procedure NA at night.

MISSED APPROACH: Climb to 3900 then climbing right turn to 9000 direct RNDY and hold, continue climb-in-hold to 9000.
***Missed approach requires minimum climb of 350 feet per NM to 6500; If unable to meet climb gradient, see RNAV (GPS)-B.**

AWOS-2 135.425	SEATTLE CENTER 123.95 290.55	UNICOM 122.7 (CTAF) 0
--------------------------	--	---------------------------------



ELEV 2131		TDZE 2131
-----------	--	-----------



<p>INOBE</p> <p>CHIRK</p> <p>HAGOV</p> <p>ZUXIS</p> <p>LUFDU</p> <p>AKOBE</p> <p>3900</p> <p>9000</p> <p>RNDY</p> <p>7300</p> <p>006°</p> <p>6200</p> <p>007°</p> <p>4900</p> <p>3.75°</p> <p>TCH 50</p> <p>034°</p> <p>4300</p> <p>3480</p> <p>4.6 NM to AKOBE</p> <p>2.6 NM to AKOBE</p> <p>4.2 NM</p> <p>4.4 NM</p> <p>1.5 NM</p> <p>2.1 NM</p> <p>2.6 NM</p> <p>0.7</p>				
<p>VGSI and descent angles not coincident (VGSI Angle 3.75/TCH 28).</p>				
CATEGORY	A	B	C	D
LP MDA*	3100-1¼ 969 (1000-1¼)	3100-1½ 969 (1000-1½)	3100-3 969 (1000-3)	NA

RNAV (GPS) Z RWY 2