

APP CRS 198°	Rwy Ldg TDZE Apt Elev	5501 2131 2131
------------------------	-----------------------------	---

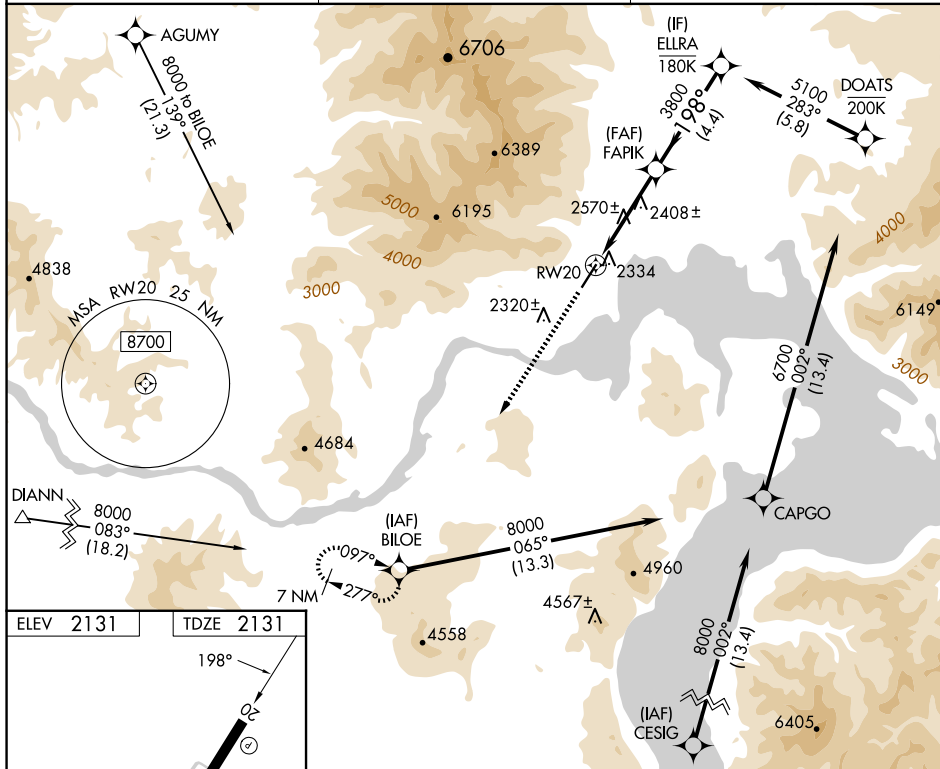
RNAV (GPS) Y RWY 20
SANDPOINT (SZT)

RNP APCH.

- T** Circling NA west of Rwy 2-20. Rwy 20 helicopter visibility reduction
A below $\frac{3}{4}$ SM NA. VDP NA with Deer Park altimeter setting. When
☔-16°C local altimeter not received, use Deer Park altimeter setting and
 increase all MDA 120 feet.

MISSED APPROACH: Climb to 6600 direct BILOE and hold, continue climb in hold to 6600.

AWOS-2 135.425	SEATTLE CENTER 123.95 290.55	UNICOM 122.7 (CTAF) 0
--------------------------	--	---------------------------------



6600
BILOE

VGS1 and descent angles not coincident
(VGS1 Angle 3.75/TCH 50).

ELRA

FAPIK

3.1 NM to RW20

$\leq 3.77^\circ$
TCH 55

198°

5100

3800

RW20

3.1 NM 0.9 NM 4.4 NM

CATEGORY	A	B	C	D
LNAV MDA	3400-1¼ 1269 (1300-1¼)	3400-1½ 1269 (1300-1½)	3400-3 1269 (1300-3)	NA
C CIRCLING	3400-1¼ 1269 (1300-1¼)	3400-1½ 1269 (1300-1½)	3400-3 1269 (1300-3)	NA