

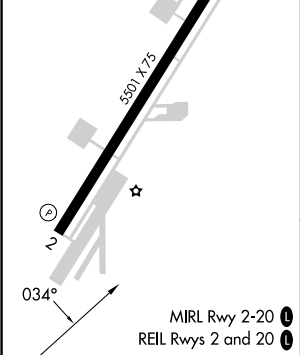
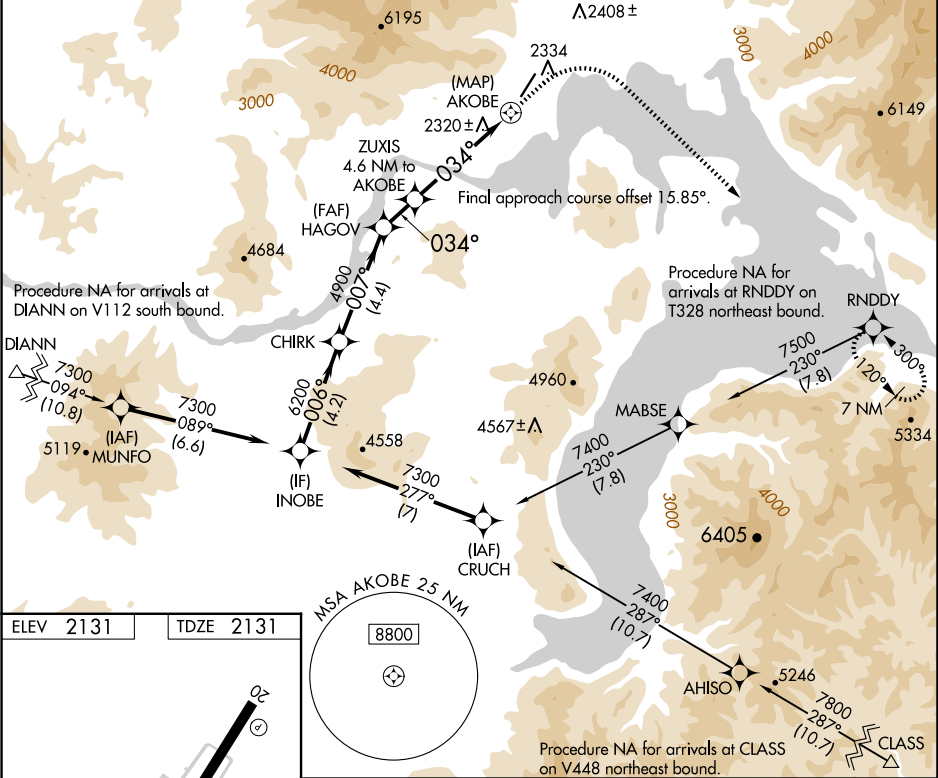
APP CRS	Rwy Ldg	5501
034°	TDZE	2131
	Apt Elev	2131

RNAV (GPS) Y RWY 2

SANDPOINT (SZT')

RNP APCH - GPS.	MISSED APPROACH: Climb to 3900 then climbing right turn to 9000 direct RNDY and hold, continue climb-in-hold to 9000. *Missed approach requires minimum climb of 310 feet per NM to 8100; If unable to meet climb gradient, see RNAV (GPS)-B.
<div><div>▼</div><div>▲</div><div>❄</div></div> <div>Circling NA west of Rwy 2-20. Straight-in Rwy 2 NA at night, Circling Rwy 2 NA at night. Rwy 2 helicopter visibility reduction below 1 SM NA.</div>	

AWOS-2 135.425	SEATTLE CENTER 123.95 290.55	UNICOM 122.7 (CTAF) 0
-------------------	---------------------------------	--------------------------



INOBE	CHIRK	HAGOV	ZUXIS	AKOBE
7300	6200	4900	4300	
006°	007°	3.75° TCH 50	034°	
4.2 NM	4.4 NM	1.5 NM	4.6 NM	0.7 NM
CATEGORY	A	B	C	D
LNAY MDA*	3560-1¼ 1429 (1500-1¼)	3560-1½ 1429 (1500-½)	3560-3 1429 (1500-3)	NA
CIRCLING	3560-1¼ 1429 (1500-1¼)	3560-1½ 1429 (1500-½)	3560-3 1429 (1500-3)	NA