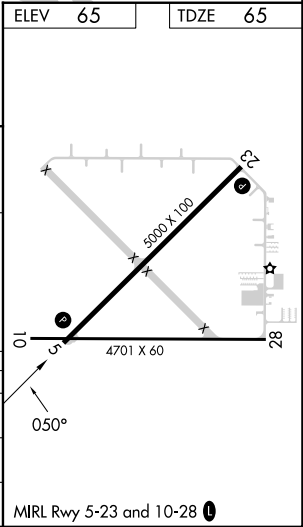
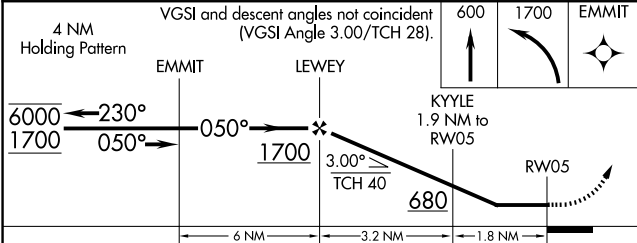
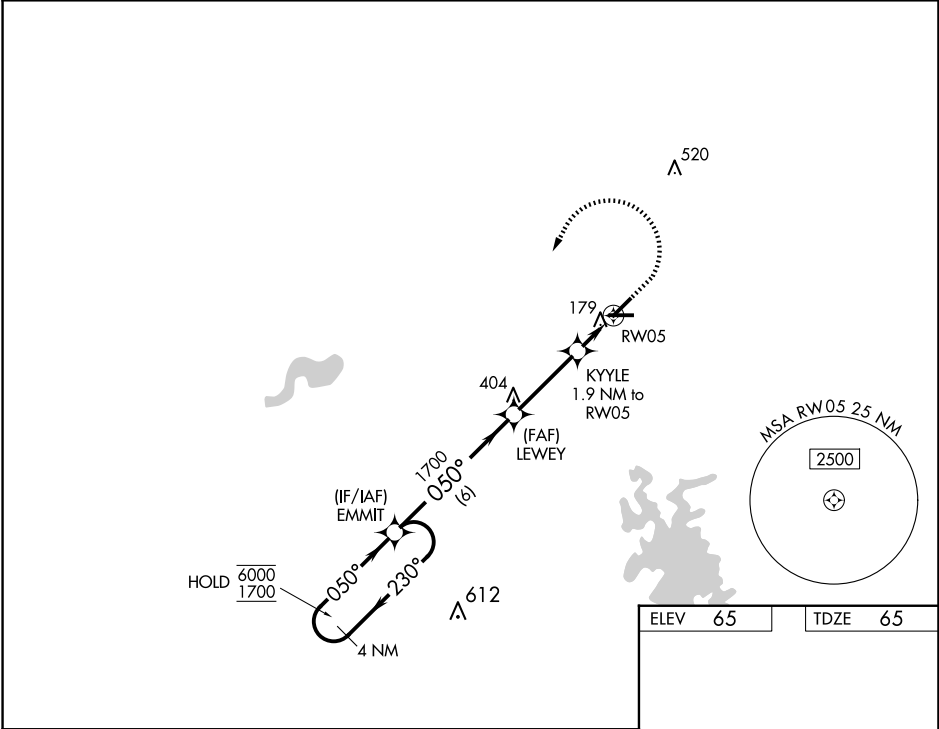


WAAS CH <b>72946</b> <b>W05A</b>	APP CRS <b>050°</b>	Rwy Idg <b>5000</b> TDZE <b>65</b> Apt Elev <b>65</b>
--	------------------------	---

RNAV (GPS) RWY 5  
MARION COUNTY (X35)

RNP APCH - GPS. <div><div>▼</div><div>▲ NA</div></div> <div>Rwy 5 helicopter visibility reduction below 1 SM NA. Use Ocala altimeter setting; when not received, use Leesburg altimeter setting and increase all MDAs 60 feet and LNAV and LP visibility Cat C/D ¼ SM and Circling visibility Cat D ¼ SM. Straight-in Rwy 5 NA at night, Circling Rwy 5, 10, 28 NA at night.</div>		MISSED APPROACH: Climb to 600 then climbing left turn to 1700 direct EMMIT and hold.
OCF AWOS-3PT <b>128.125</b>	JACKSONVILLE APP CON <b>118.6 251.15</b>	UNICOM <b>122.8 (CTAF) 0</b>



SE-3, 10 JUL 2025 to 07 AUG 2025

SE-3, 10 JUL 2025 to 07 AUG 2025