

DUNNELLON, FLORIDA

AL-9138 (FAA)

24081

WAAS CH 48828 W23A	APP CRS 230°	Rwy Idg 5000 TDZE 65 Apt Elev 65
--	------------------------	---

RNAV (GPS) RWY 23

MARION COUNTY (X35)

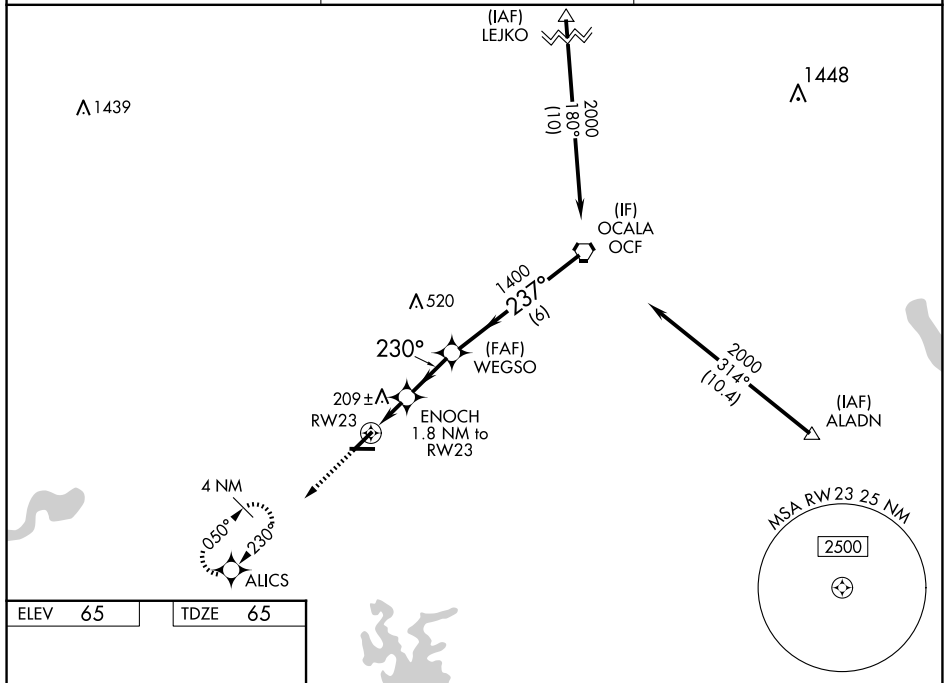
RNP APCH - GPS.



Rwy 23 helicopter visibility reduction below $\frac{3}{4}$ SM NA. Baro-VNAV NA. Use Ocala altimeter setting; when not received, use Leesburg altimeter setting and increase LPV DA to 424 feet; increase LNAV/VNAV DA to 579 feet; increase all MDAs 60 feet and LNAV visibility Cat C/D $\frac{1}{8}$ SM, and Circling visibility Cat D $\frac{1}{4}$ SM. Circling Rwy 5, 10, 28 NA at night.

MISSED APPROACH: Climb to 3000 direct ALICS and hold, continue climb-in-hold to 3000.

OCF AWOS-3PT 128.125	JACKSONVILLE APP CON 118.6 251.15	UNICOM 122.8 (CTAF) 0
--------------------------------	---	--



MIRL Rwy 5-23 and 10-28

VGS and RNAV glidepath not coincident
(VGS Angle 3.00/TCH 27).

WEGSO 1400

OCF VORTAC 2000

ENoch 1.8 NM to RW23

RW23

GP 3.00° TCH 40

CATEGORY	A	B	C	D
LPV DA	374-1	309 (400-1)		
LNNAV/VNAV DA	529-1 $\frac{3}{8}$	464 (500-1 $\frac{3}{8}$)		
LNNAV MDA	540-1	475 (500-1)	540-1 $\frac{3}{8}$	475 (500-1 $\frac{3}{8}$)
CIRCLING	540-1	475 (500-1)	580-1 $\frac{1}{2}$ 515 (600-1 $\frac{1}{2}$)	760-2 $\frac{1}{4}$ 695 (700-2 $\frac{1}{4}$)

DUNNELLON, FLORIDA

Amdt 1 21MAR24

29°04'N-82°23'W

MARION COUNTY (X35)
RNAV (GPS) RWY 23

SE-3, 10 JUL 2025 to 07 AUG 2025