



WAAS CH 82336 W33A	APP CRS 333°	Rwy Ldg 2630 TDZE 147 Apt Elev 147
--	------------------------	---

RNAV (GPS) RWY 33

RNP APCH - GPS.

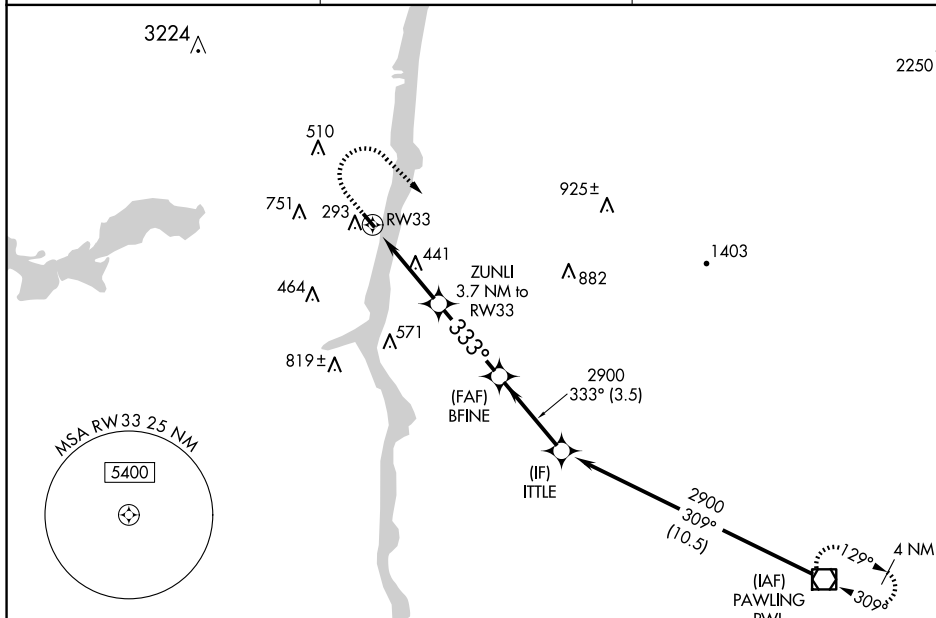
	Use Hudson altimeter setting. When not received, use Newburgh altimeter setting and increase all MDA 60 feet. Baro-VNAV NA. Rwy 33 helicopter visibility reduction below 1 SM NA. Straight-in/Circling Rwy 33 at night, operational VGSi required, remain on or above VGSi glidepath until threshold. Circling Rwy 15 NA at night.
 NA	

MISSED APPROACH: Climb to 600, then climbing right turn to 3000 direct PWL VOR/DME and hold.

NEW YORK APP CON
132.75 363.1

UNICOM
122.8 (CTAF)

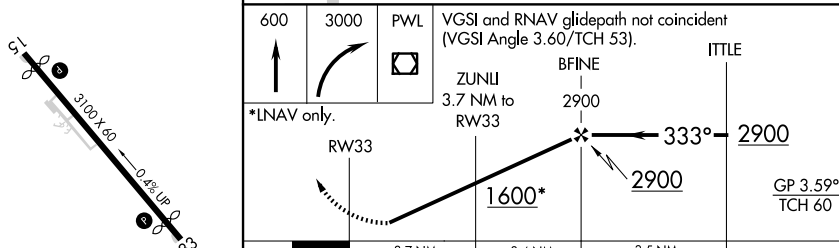
123.3 L



ELEV	147	D	TDZE	147
------	-----	----------	------	-----

^Δ1999

Procedure NA for arrivals on
PWL VOR/DME airway radials 250 CW 354.



		3.4 NM		3.4 NM		3.5 NM	
CATEGORY		A		B		C	
						D	
LPV	DA	499-1		352 (400-1)		NA	
RNAV/ VNAV	DA	635-1 $\frac{3}{8}$		489 (500-1 $\frac{3}{8}$)		NA	
RNAV	MDA	880-1 733 (800-1)		880-1 $\frac{1}{4}$ 733 (800-1 $\frac{1}{4}$)		NA	
C CIRCLING		880-1 733 (800-1)		960-1 $\frac{1}{4}$ 813 (900-1 $\frac{1}{4}$)		NA	

REIL Rwy 33 **L**
MIRL Rwy 15-33 **L**

KINGSTON, NEW YORK

Amdt 1B 07SEP23

41°59'N-73°58'W

KINGSTON-ULSTER (20N)

RNAV (GPS) RWY 33