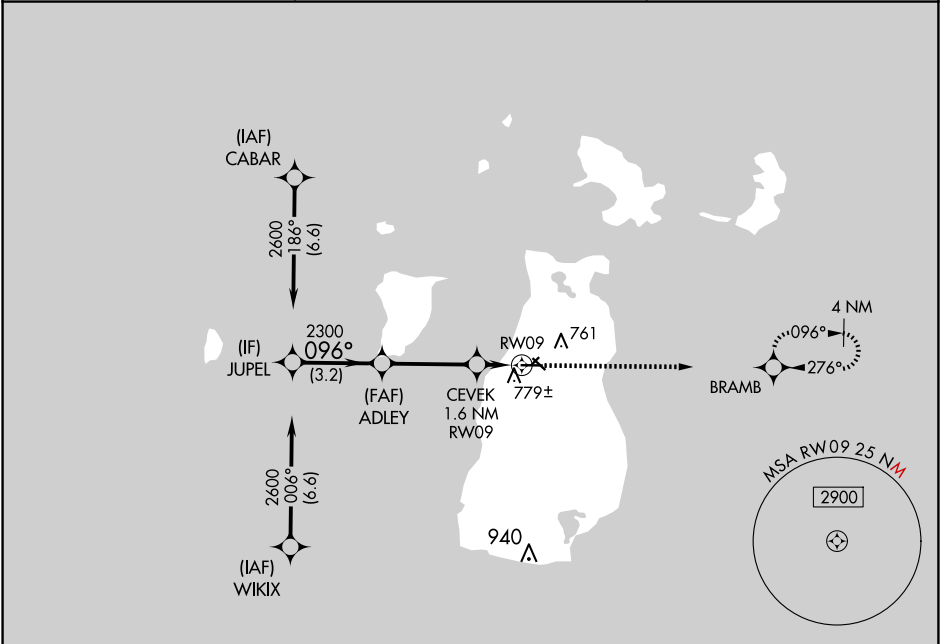


WAAS CH 77943 W09A	APP CRS 096°	Rwy ldg 4299 TDZE 670 Apt Elev 670
--	------------------------	---

RNAV (GPS) RWY 9
BEAVER ISLAND (SJX)

RNP APCH - GPS.		MISSED APPROACH: Climb to 2600 direct BRAMB and hold.
Circling NA to Rwys 5-23 and 14-32. For uncompensated Baro-VNAV systems, LNAV/VNAV NA below -16°C or above 54°C.		
AWOS-3 118.075	MINNEAPOLIS CENTER 134.6 354.05	UNICOM 122.8 (CTAF) 0



VGSI and RNAV glidepath not coincident (VGSI Angle 3.00/TCH 24).				ELEV 670	TDZE 670	
<p>JUPEL 2600 096° GP 3.00° TCH 40 2300 ADLEY 2300 CEVEK 1.6 NM RW09 1.1 NM to RW09 1.1 NM BRAMB 2600</p> <p>3.2 NM 3.4 NM 0.5 NM 1.1 NM</p>						
CATEGORY	A	B	C	D		
LPV DA	920-1 250 (300-1)			NA		
LNAV/ VNAV DA	949-1 279 (300-1)			NA		
LNAV MDA	1040-1 370 (400-1)			NA		
CIRCLING	1120-1 450 (500-1)	1180-1½ 510 (600-1½)		NA		

MIRL Rwy 9-27
REIL Rwy 9 and 27

EC-1, 10 JUL 2025 to 07 AUG 2025

EC-1, 10 JUL 2025 to 07 AUG 2025