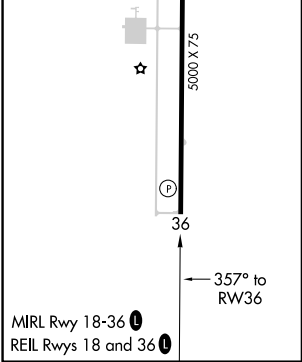
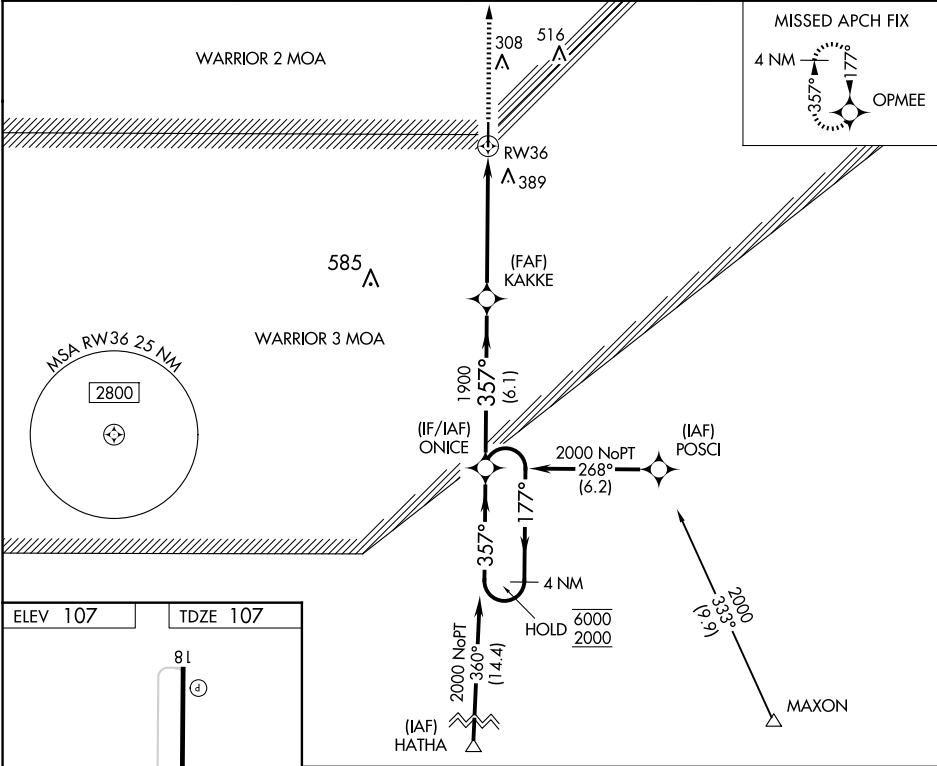


APP CRS	Rwy Idg	5000
357°	TDZE	107
	Apt Elev	107

RNAV (GPS) RWY 36  
ALLEN PARISH (ACP)

RNP APCH - GPS.	MISSED APPROACH: Climb to 2200 direct OPMEE and hold.
-----------------	---

AWOS-3PT 118.275	POLK APP CON 123.7 261.3	GCO 135.075	UNICOM 122.8 (CTAF) 1
---------------------	-----------------------------	----------------	--------------------------



4 NM Holding Pattern		ONICE	2200	OPMEE
6000 2000		177° 357°	357°	
		KAKKE	3.00° TCH 51	RW36
		1900		
		6.1 NM	5.5 NM	
CATEGORY	A	B	C	D
LNAV MDA	540-1	433 (500-1)	540-1¼ 433 (500-1¼)	NA
CIRCLING	560-1 453 (500-1)	700-1 593 (600-1)	760-1¾ 653 (700-1¾)	NA

SC-4, 10 JUL 2025 to 07 AUG 2025

SC-4, 10 JUL 2025 to 07 AUG 2025