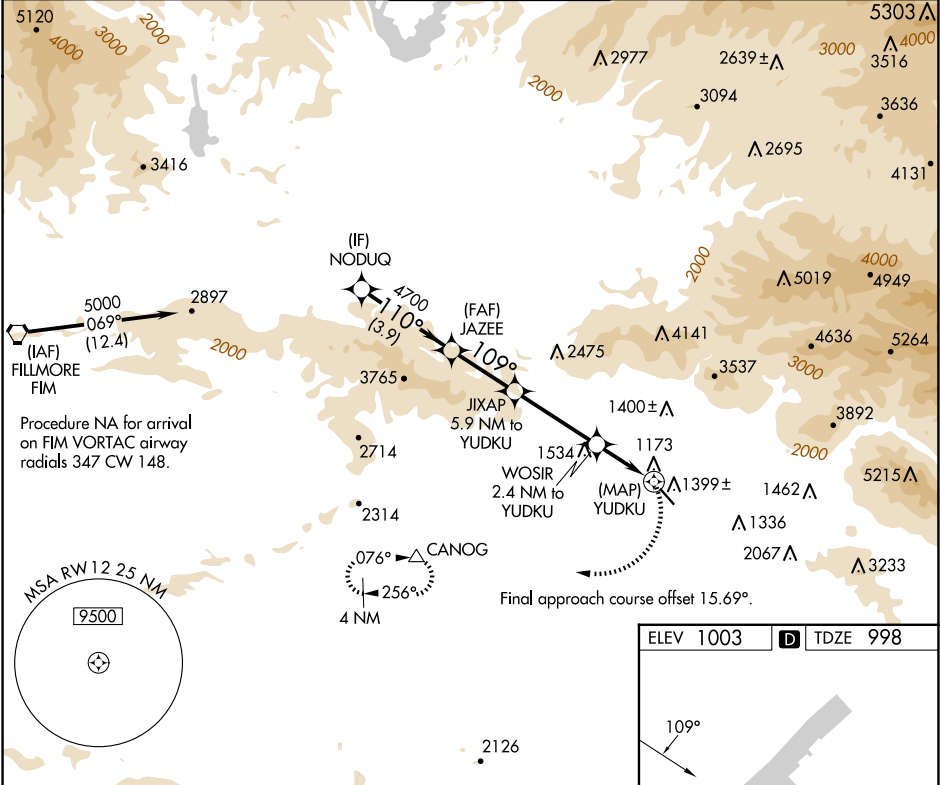


APP CRS	Rwy Ldg	3181
109°	TDZE	998
	Apt Elev	1003

RNAV (GPS) RWY 12
WHITEMAN (WHP)

RNP APCH.	MISSED APPROACH: Climbing right turn to 4000 direct CANOG and hold.
NA	Procedure NA at night. When local altimeter setting not received, use Burbank altimeter setting. Rwy 12 helicopter visibility reduction below 1 SM NA.

ATIS 132.1	SOCAL APP CON 120.4 360.6 (NORTH) 134.2 338.2 (WEST)	WHITEMAN TOWER ★ 135.0 (CTAF)	GND CON 125.0	UNICOM 122.95
---------------	--	----------------------------------	------------------	------------------



ELEV 1003					TDZE 998				
NODUQ					CANOG				
5000					4000				
110°					109°				
4700					3620				
3.9 NM					2.7 NM				
3.5 NM					2.4 NM				
0.5 NM					0.5 NM				
CATEGORY	A	B	C	D	TWR 4120 X 175				
LNVA MDA	1660-1	662 (700-1)	1660-1 7/8 662 (700-1 7/8)	NA	REIL Rwy 12 and 30				
CIRCLING	1700-1 697 (700-1)	1860-1 1/4 857 (900-1 1/4)	2200-3 1197 (1200-3)	NA	MIRL Rwy 12-30				

SW-3, 10 JUL 2025 to 07 AUG 2025

SW-3, 10 JUL 2025 to 07 AUG 2025