

DME required.

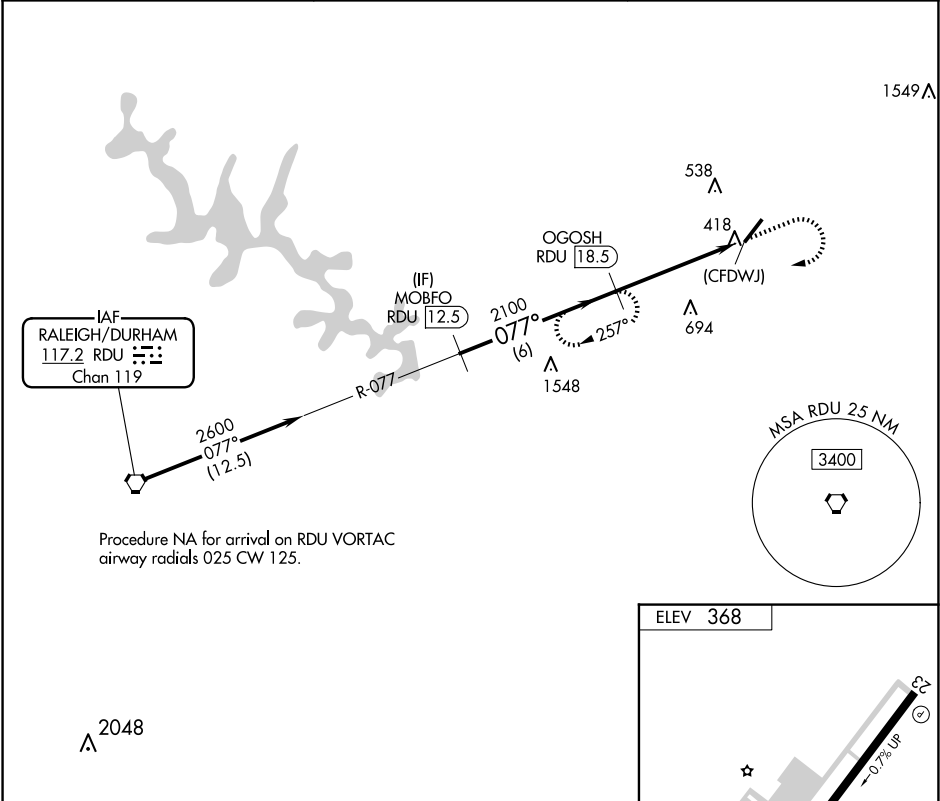
▼

▲

When local altimeter not received, use Raleigh-Durham Intl altimeter setting and increase all MDA 80 feet and Cats B/C visibility ¼ SM.

MISSED APPROACH: Climb to 1200 then climbing right turn to 2600 on heading 280° and on RDU VORTAC R-077 to OGOSH/RDU 18.5 DME and hold.

AWOS-3 118.325	RALEIGH APP CON 125.3 353.675	UNICOM 123.0 (CTAF) 0
-------------------	----------------------------------	--------------------------



MOBFO  
RDU 12.5

2600

OGOSH  
RDU 18.5

2100

1200

2600

hdg 280°

RDU R-077

OGOSH  
RDU 18.5

077°

(CFDWJ)

6 NM

5 NM

CATEGORY

A

B

C

D

CIRCLING

1260-1¼

892 (900-1¼)

1260-2¾

892 (900-2¾)

1260-3

892 (900-3)

5498 x 100

077°

AS

HIRL Rwy 5-23

REIL Rwy 23

FAF to MAP 5 NM

Knots

60

90

120

150

180

Min:Sec

5:00

3:20

2:30

2:00

1:40