

WAAS CH <b>90103</b> <b>W05A</b>	APP CRS <b>046°</b>	Rwy Idg <b>5498</b> TDZE <b>368</b> Apt Elev <b>368</b>
--	------------------------	---

RNAV (GPS) RWY 5

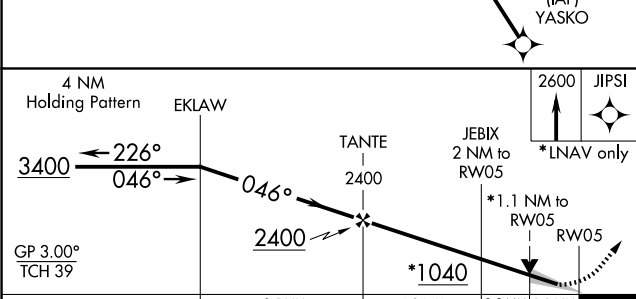
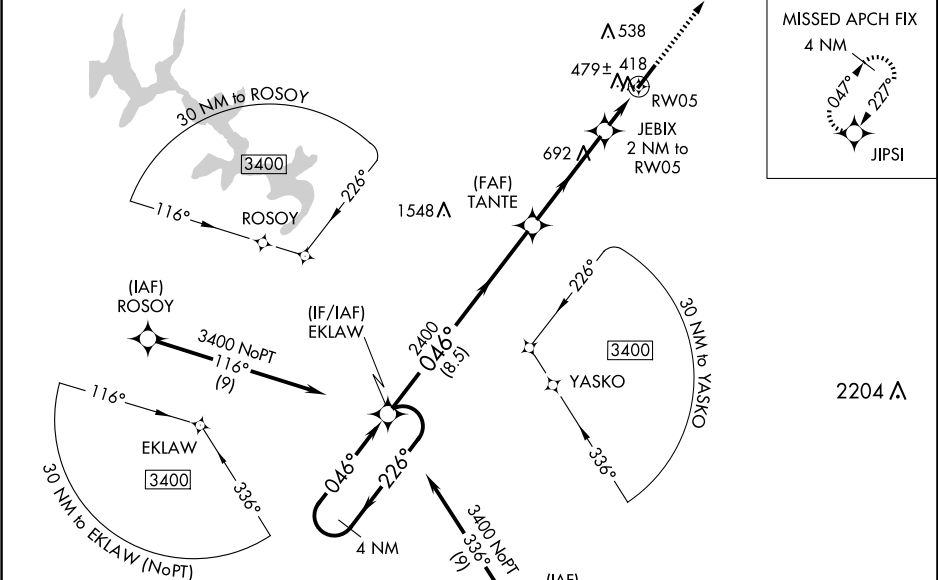
TRIANGLE NORTH EXEC (LHZ)

**⚠** For uncompensated Baro-VNAV systems, LNAV/VNAV NA below -15°C (5°F) or above 41°C (105°F). DME/DME RNP-0.3 NA. When local altimeter setting not received, use Raleigh-Durham altimeter setting and increase LPV DA to 633 feet; LNAV/VNAV DA to 705 feet and all visibilities ½ SM. Increase all MDAs 80 feet and visibility Cat C/D ¼ SM. For inop MALSR, increase LNAV/VNAV all Cats visibility to ¾ mile and LNAV Cats C/D visibility to 1 mile. For inop MALSR when using Raleigh-Durham altimeter setting, increase LPV all Cats visibility to ¾ mile. Baro-VNAV and VDP NA with Raleigh-Durham altimeter setting.

MALSR

MISSED APPROACH:  
Climb to 2600 direct  
JIPSI and hold.

AWOS-3 <b>118.325</b>	RALEIGH APP CON <b>125.3 353.675</b>	UNICOM <b>123.0 (CTAF) 0</b>
--------------------------	---	---------------------------------



CATEGORY	A	B	C	D
LPV DA		568-½	200 (200-½)	
LNAV/VNAV DA		640-½	272 (300-½)	
LNAV MDA	740-½	372 (400-½)	740-⅝	372 (400-⅝)
CIRCLING	800-1 432 (500-1)	840-1 472 (500-1)	980-1¾ 612 (700-1¾)	1000-2 632 (700-2)

