

WAAS CH 62825 W23A	APP CRS 227°	Rwy Idg TDZE 352 Apt Elev 368
--	------------------------	---

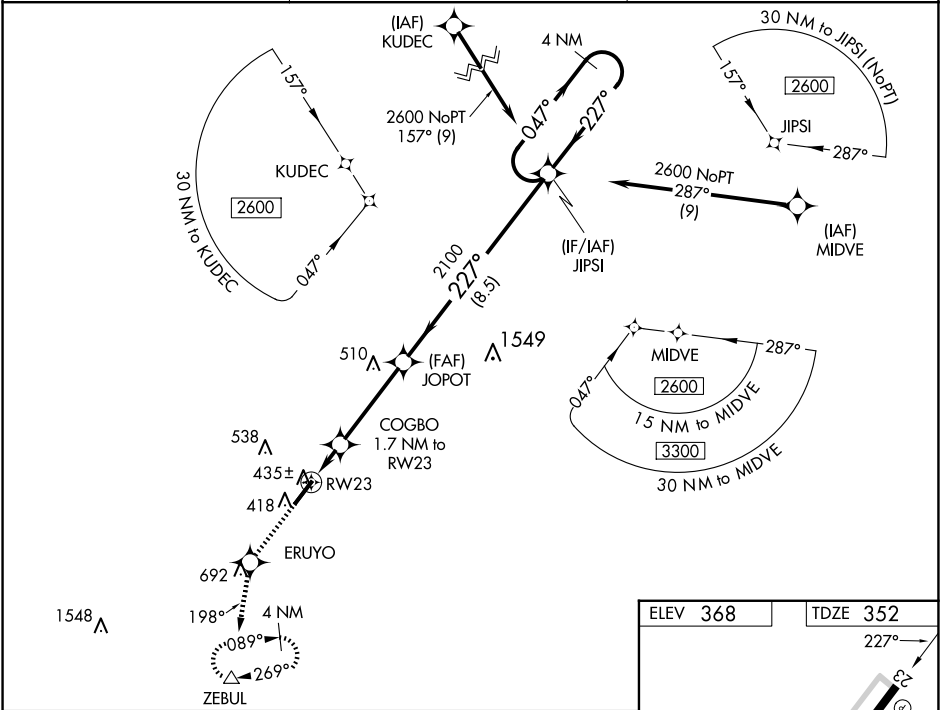
RNAV (GPS) RWY 23




TRIANGLE NORTH EXEC (LHZ)

Baro-VNAV NA when using Raleigh-Durham altimeter setting. For uncompensated Baro-VNAV systems, LNAV/VNAV NA below -15°C (5°F) or above 41°C (105°F). When VGSi inop, Straight-in/Circling Rwy 23 procedure NA at night. DME/DME RNP-0.3 NA. Helicopter visibility reduction below 1 SM NA. When local altimeter setting not received, use Raleigh-Durham altimeter setting and increase LPV DA to 667 feet; LNAV/VNAV DA to 684 feet and all visibilities ½ SM. Increase all MDAs 80 feet and visibility Cats C/D ¾ SM.

MISSED APPROACH: Climb to 3300 direct ERUYO and on track 198° to ZEBUL and hold, continue climb-in-hold to 3300.

AWOS-3 118.325	RALEIGH APP CON 125.3 353.675	UNICOM 123.0 (CTAF) 0
--------------------------	---	---------------------------------



3300	ERUYO	tr 198°	ZEBUL	
				
<p>* LNAV only</p> <p>COGBO 1.7 NM to RW23</p> <p>RW23</p> <p>900*</p> <p>1.7 NM</p> <p>3.7 NM</p> <p>8.5 NM</p> <p>JOPOT 2100</p> <p>JIPSI 2600</p> <p>047° →</p> <p>← 227°</p> <p>227°</p> <p>2100</p> <p>GP 3.00° TCH 46</p> <p>4 NM Holding Pattern</p>				
CATEGORY	A	B	C	D
LPV DA	602-1 250 (300-1)			
LNAV/VNAV DA	619-1 267 (300-1)			
LNAV MDA	700-1 348 (400-1)			
CIRCLING	800-1 432 (500-1)	840-1 472 (500-1)	980-1¾ 612 (700-1¾)	1000-2 632 (700-2)

