

LOC/DME	I-LHZ	APP CRS	Rwy Idg	5498
109.35		046°	TDZE	368
Chan 30 (Y)			Apt Elev	368

ILS or LOC RWY 5

TRIANGLE NORTH EXEC (LHZ)

DME or RADAR required.

▼

NA

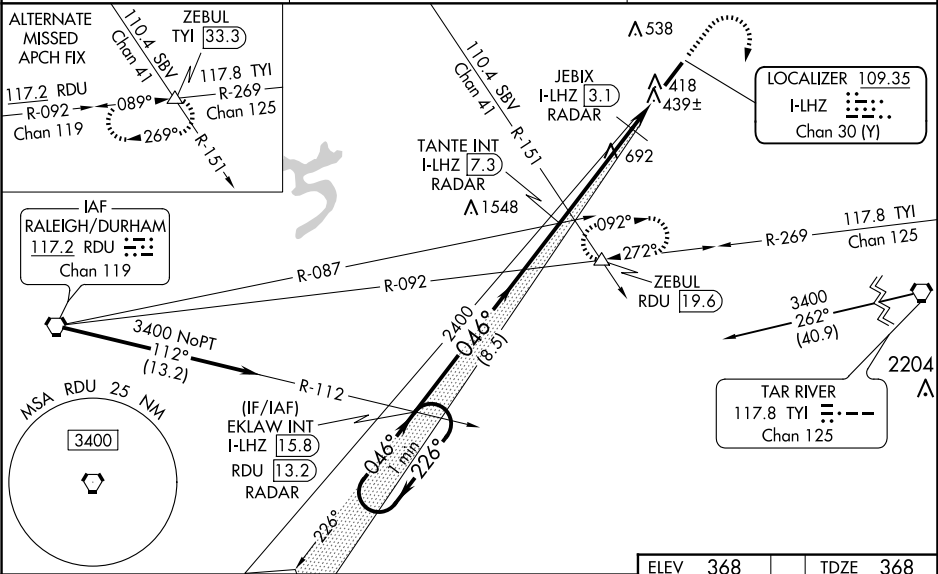
VDP NA when using Raleigh-Durham altimeter setting. When local altimeter setting not received, use Raleigh-Durham altimeter setting and increase ILS DA to 633 feet and all MDAs 80 feet; increase S-LOC and Circling visibility Cats C/D ¼ SM and JEBIX Fix Minimums: Circling visibility Cat C/D ¼ SM. For inop ALS when using Raleigh-Durham altimeter setting, increase S-ILS all Cats visibility to ½ SM, S-LOC Cats C/D visibility to 1½ SM and JEBIX Fix Minimums S-LOC Cats C/D visibility to 1½ SM.

MALSR

AS

MISSED APPROACH: Climb to 1400 then climbing right turn to 2600 on heading 190° and on RDU VORTAC R-092 to ZEBUL INT/RDU 19.6 DME and hold.

AWOS-3 118.325	RALEIGH APP CON 125.3 353.675	UNICOM 123.0 (CTAF)
-------------------	----------------------------------	------------------------



ELEV 368		TDZE 368	
One Minute Holding Pattern		*LOC only. #1040 when using Raleigh-Durham altimeter setting.	
EKLAW INT I-LHZ [15.8] RADAR		JEBIX I-LHZ [3.1] RADAR	
TANTE INT I-LHZ [7.3] RADAR		ZEBUL I-LHZ [1.1] RADAR	
GS 3.00° TCH 39		#*960	
CATEGORY		A	
S-ILS 5		568-½ 200 (200-½)	
S-LOC 5		960-½ 592 (600-½) 960-1¼ 592 (600-1¼)	
CIRCLING		960-1 592 (600-1) 980-1¾ 612 (700-1¾) 1000-2 632 (700-2)	
JEBIX FIX MINIMUMS		S-LOC 5 700-½ 332 (400-½) 700-¾ 332 (400-¾)	
CIRCLING		800-1 432 (500-1) 840-1 472 (500-1) 980-1¾ 612 (700-1¾) 1000-2 632 (700-2)	
Knots		60 90 120 150 180	
Min:Sec		6:18 4:12 3:09 2:31 2:06	