

|  |                        |   |
|--|------------------------|---|
| WAAS<br>CH <b>72940</b><br><b>W14A</b> | APP CRS<br><b>142°</b> | Rwy Ldg<br>TDZE <b>44</b><br>Apt Elev <b>45</b> |
|--|------------------------|---|

RNAV (GPS) RWY 14

EASTPORT MUNI (EPM)

RNP APCH - GPS.

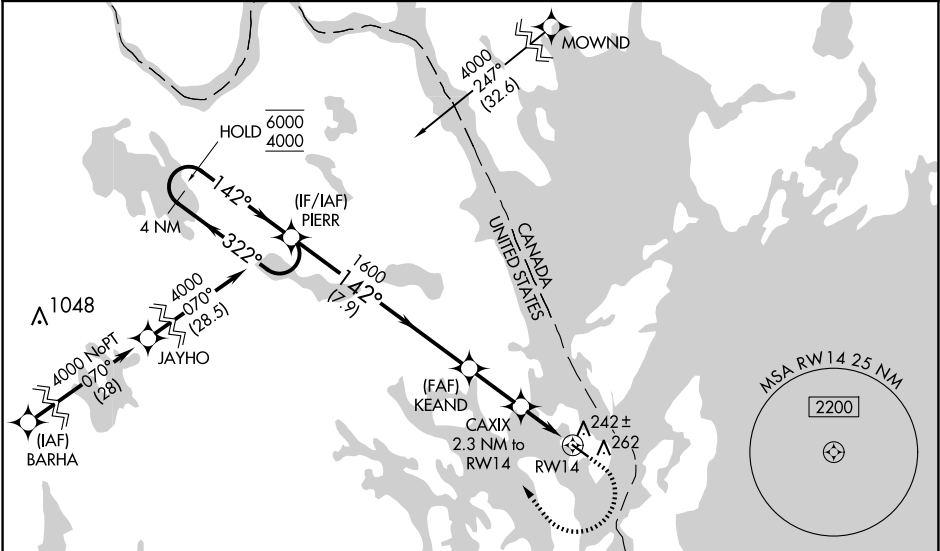
▼

⚠

Rwy 14 helicopter visibility reduction below 1 SM NA. For uncompensated Baro-VNAV systems, LNAV/VNAV NA below -15°C or above 54°C. Baro-VNAV NA when using Hancock County-Bar Harbor altimeter setting. Rwy 14 Straight-in and Circling minimums NA at night. When local altimeter setting not received, use Hancock County/Bar Harbor altimeter setting: increase LPV DA to 462 feet and all visibilities ½ SM; increase LNAV/VNAV DA to 565 feet and all visibilities ½ SM; increase all MDA 160 feet and LNAV visibility Cat C/D ¾ SM and Circling visibility Cat C/D ¾ SM.

MISSED APPROACH: Climb to 520 then climbing right turn to 4000 direct PIERR and hold, continue climb-in-hold to 4000.

|                         |                                      |                                 |
|-------------------------|--------------------------------------|---------------------------------|
| AWOS-AV<br><b>122.8</b> | BOSTON CENTER<br><b>124.25 290.5</b> | UNICOM<br><b>122.8 (CTAF) 0</b> |
|-------------------------|--------------------------------------|---------------------------------|



4 NM Holding Pattern

6000  
4000

GP 3.10°  
TCH 53

PIERR

KEAND

CAXIX  
2.3 NM to RWY14

RWY14

520

4000

PIERR

7.9 NM

2.3 NM

2.3 NM

142°

322°

142°

142°

1600

840

1600

1600

| CATEGORY     | A     | B           | C                      | D                      |
|--------------|-------|-------------|------------------------|------------------------|
| LPV DA       | 309-1 |             | 265 (300-1)            |                        |
| LNAV/VNAV DA | 412-1 |             | 368 (400-1)            |                        |
| LNAV MDA     | 500-1 | 456 (500-1) | 500-1¾                 | 456 (500-1¾)           |
| CIRCLING     | 580-1 | 535 (600-1) | 640-1½<br>595 (600-1½) | 820-2½<br>775 (800-2½) |

ELEV 45

TDZE 44

142°

0.3% UP

4002 X 75

32

MIRL Rwy 14-32 0

REIL Rwy 14 and 32 0

EASTPORT, MAINE  
Amdt 2 05SEP24

44°55'N-67°01'W

EASTPORT MUNI (EPM)

RNAV (GPS) RWY 14