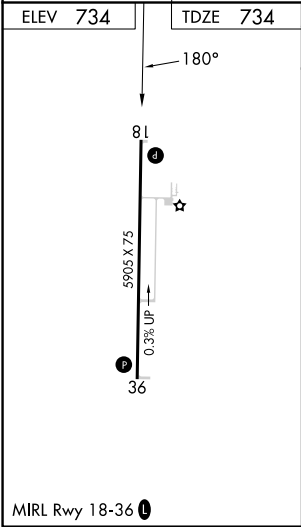
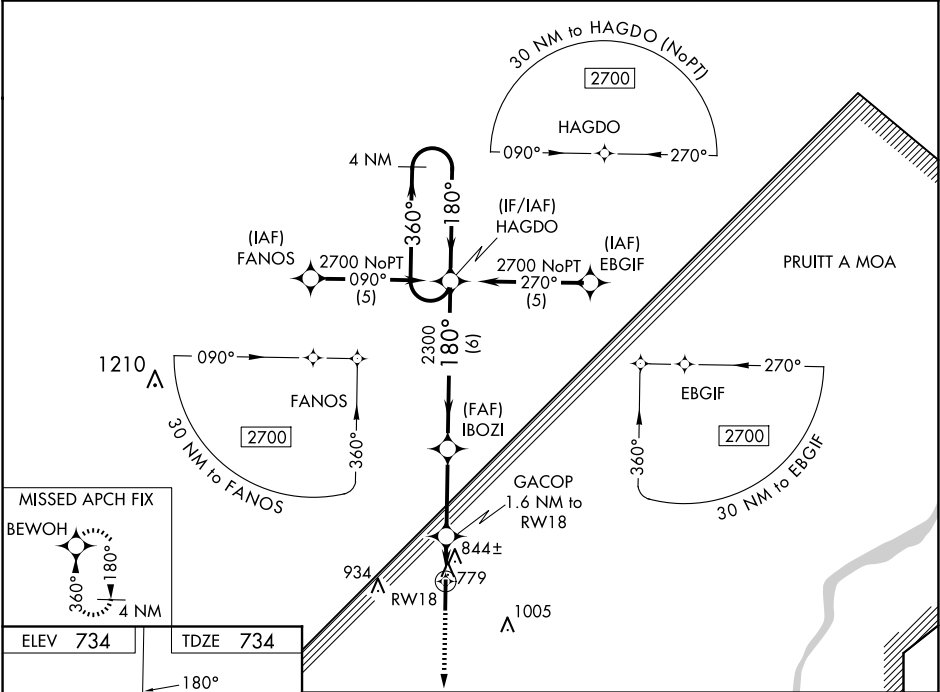


WAAS CH 45912 W18A	APP CRS 180°	Rwy Idg TDZE Apt Elev	5905 734 734
--	------------------------	-----------------------------	---

RNAV (GPS) RWY 18

MOUNT STERLING MUNI (I63)

RNP APCH.		MISSED APPROACH: Climb to 2700 direct BEWOH and hold.	
Baro-VNAV NA. Rwy 18 helicopter visibility reduction below ¾ SM NA. When local altimeter setting not received, use Quincy altimeter setting: increase Circling Cat C and D MDA 60 feet and visibility Circling Cat C and D ¼ SM.			
AWOS-3PT 118.325	UIN ASOS 121.425	KANSAS CITY CENTER 126.225 317.775	UNICOM 122.8 (CTAF) 0



2700

BEWOH

↑

⬤

⬤

⬤

⬤

*LNAV only

HAGDO

4 NM Holding Pattern

360°→

←180°

2700

GACOP

1.6 NM to RW18

IBOZI

180°

2300

*1280

RW18

1.6 NM

3.1 NM

6 NM

GP 3.00°

TCH 40

CATEGORY	A	B	C	D
LPV DA	1066-1¼ 332 (400-1¼)			
LNAV/VNAV DA	1191-1¾ 457 (500-1¾)			
LNAV MDA	1160-1	426 (500-1)	1160-1¼	426 (500-1¼)
CIRCLING	1200-1	466 (500-1)	1360-1¾ 626 (700-1¾)	1360-2 626 (700-2)