

APP CRS
341°

Rwy Ldg
TDZE
377

Apt Elev
378

RNAV (GPS) RWY 34

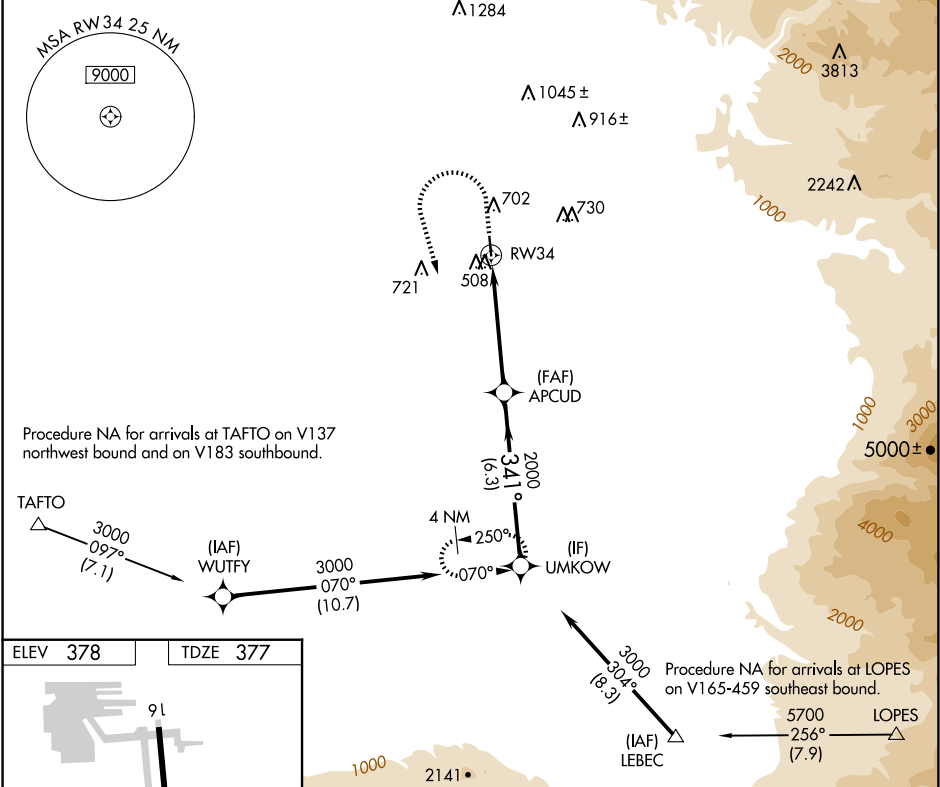
BAKERSFIELD MUNI (L45)

NA

DME/DME RNP-0.3 NA. Use Meadows Fld altimeter setting. When Meadows Fld altimeter setting not received, use Porterville altimeter setting and increase all MDA 80 feet, increase LNAV and Circling Cat C and D visibility ¼ mile. Helicopter visibility reduction below ¾ SM NA. Night Landing Rwy 16 NA.

MISSED APPROACH: Climb to 1200 then climbing left turn to 3000 direct UMKOW and hold.

BFL ASOS 118.6	BAKERSFIELD APP CON ★ 126.45 270.3	UNICOM 122.8 (CTAF) 0
-------------------	---------------------------------------	--------------------------



4000 X 75

34

341°

MIRL Rwy 16-34

REIL Rws 16 and 34

1200
↑

3000
↶

UMKOW
✦

Visual Segment - Obstacles.

APCUD

RW34

2000

341°

3000

UMKOW

4.9 NM

6.3 NM

CATEGORY	A	B	C	D
LNAV MDA	840-1 463 (500-1)		840-1 ³ / ₈ 463 (500-1 ³ / ₈)	
C CIRCLING	1060-1 682 (700-1)		1120-2 ¹ / ₄ 742 (800-2 ¹ / ₄)	1120-2 ¹ / ₂ 742 (800-2 ¹ / ₂)